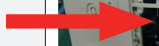


CLARIFICATION OF WHICH AC UNITS SHOULD BE RETURNED TO PUMP HOUSE

RE-INSPECTION OPERATION DIAGRAM:

Step 1

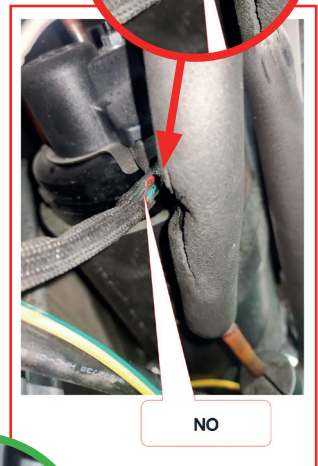
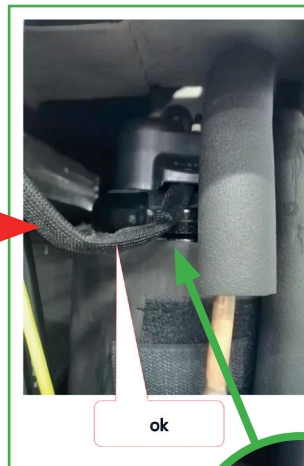
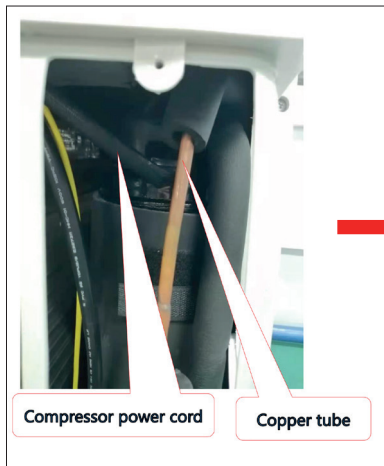
Remove the grille screws, and take off the grille



THIS UNIT IS FAULTY. PLEASE RETURN TO PUMP HOUSE

Step 2

Check whether the compressor power cord is damaged

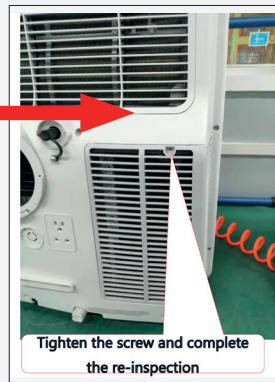
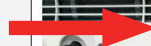
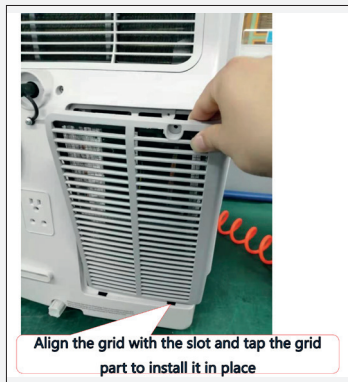


THIS UNIT IS OK. THERE IS NO NEED TO RETURN THE UNIT TO PUMP HOUSE



Step 3

If the compressor power cord is not damaged (B), reinstall the grille, and complete the return inspection. If the power cord is damaged (A), return the machine to Pump House for a replacement.



NB
Please only return units to Pump House if they are showing exposed red and blue cables.