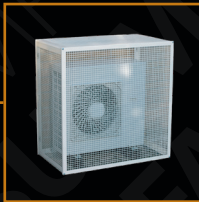


SPECIALIST

# PRODUCT GUIDE

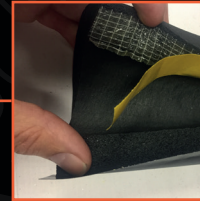
## AIR SOURCE HEAT PUMPS

### INSTALLATION PRODUCTS



PAGE 3

## BOILER & HEATING

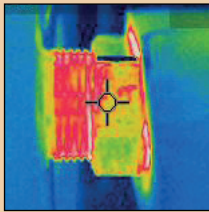


PAGE 15

## CONTENTS

### AIR SOURCE HEAT PUMPS

Installing .....	4
Connecting .....	9
Insulating .....	9
Protecting .....	11
Maintaining .....	13



**NOT ALL INSULATION IS THE SAME!**  
**SEE PAGE 14**

### BOILER & HEATING

Boiler condensate pumps .....	16
High temperature and pressure relief pumps .....	17
Condensate neutralisers .....	18
Drainage pumps .....	19
Soakaway and bypass valve .....	20
Condensate pump accessories .....	21
Portables .....	22
Insulation .....	22
Switches & isolators .....	23
Service & maintenance .....	23
Torches .....	24
Tape .....	24
Accessories .....	25
Plastic pipe fittings .....	27



**Everything you need from our wide range of products to make installation easier**



**If it is in our extensive range of Easy-Fit products (from brackets to protective guards) - it is EASY-to-FIT**



**From chemicals through to leak detection dyes, DiversiTech International covers all your needs**



**A full range of hand tools including BOSCH, Imperial, Spin and Hilmor**

## PRODUCTS

We strive to deliver to you, our customers, the best products on the market - constantly innovating and improving. Our products are designed to save you time. We are the only company which covers the ancillary range for the HVAC&R market.

## TECHNICAL EXPERTS

We believe that delivering exceptional technical support is crucial to the success of our customers. All our staff are technically trained, and we have a team of people ready to help you.

## INTERNATIONAL

Globally connected operations within 30 countries, and across 5 continents. We are continually customising our products and services to suit the individual needs of our international customer base.

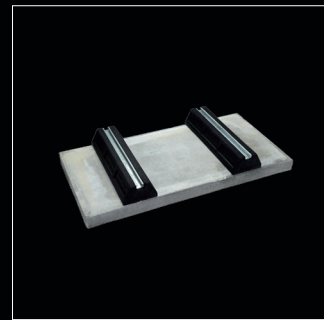
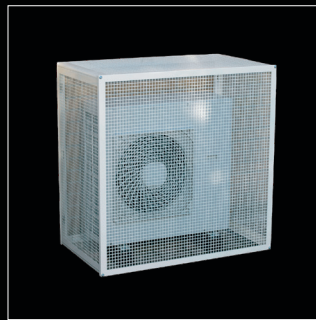
## EXPERIENCED STAFF

We understand that each customer's needs are unique. Our team at DiversiTech International respect and consider this in every decision we make. Face-to-face, over the phone or electronically - we are here to serve you. Our sales and technical teams strive for the highest standards.

## CHARITABLE GIVING

We continue to support local charities such as Maytree Respite Centre, the Brain Tumour Charity, and local sports teams and organisations. We recognise these institutions, and all their voluntary work, as being inspiring and unconditional.

# AIR SOURCE HEAT PUMPS INSTALLATION PRODUCTS



## INSTALLING



### WALL MOUNTING BRACKETS

Our Type-2 brackets come with a cross-bar to allow for correct spacing of the arms. An integral spirit level allows for easier installation. All brackets go through a 4-stage ant-corrosion process. \*



Part code	Description	Safe working load*	Max load	Crossbar	Upright	Support arm	Weight
CBR2-S	Type 2 Bracket - Small	60kg	120kg	720mm	400mm	400mm	3.8kg
CBR2-M	Type 2 Bracket - Medium	90kg	180kg	900mm	500mm	500mm	4.6kg
CBR2-L	Type 2 Bracket - Large	140kg	280kg	1040mm	550mm	540mm	6.6kg
CBR2-XL	Type 2 Bracket - XL	250kg	500kg	1040mm	550mm	660mm	16.2kg
CBR2-XXL	Type 2 Bracket - Double XL	200kg	400kg	1040mm	550mm	780mm	17.3kg

Part code	Description	Safe working load*	Max load	Crossbar	Upright	Support arm	Weight
CBR2-XL-BL	Type 2 Bracket - XL	250kg	500kg	1040mm	550mm	660mm	16.2kg
CBR2-XL-3A-BL	Type 2 Bracket - XL (3 arms)	250kg	500kg	1040mm	550mm	660mm	16.2kg
CBR2-XXL-3A-BL	Type 2 Bracket - Double XL (3 arms)	200kg	400kg	1040mm	550mm	780mm	17.3kg
CBR2-XXL-3A-BL-D	Type 2 Bracket - Double XL (3 arms)	200kg	400kg	1120mm	550mm	780mm	17.3kg

\* All brackets are tested to 2 x safe working load.

NB: Sea salts are very corrosive and affect both ferrous and non-ferrous metals. Coastal installations are particularly at risk as they are frequently exposed to sea salt solutions followed by dry periods, where this wet/dry cycle produces a very corrosive environment. We strongly recommend that in such locations only our stainless steel brackets are installed.

## EASY-FIT CONDENSATE TRAYS

Concave profile to ensure efficient drainage. Supplied with fixing arms to mount to bracket. All trays go through a 4-stage ant-corrosion process. Also available in plastic.



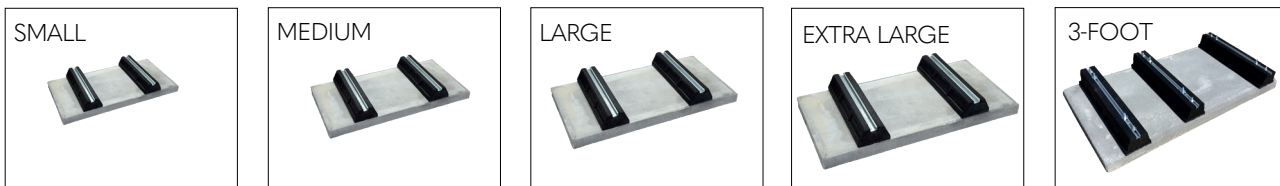
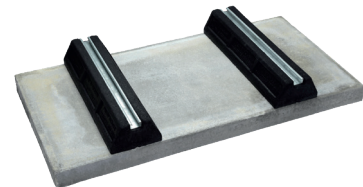
Part code	Description	Width	Length	Weight
CCTM-800	Metal tray - small	400mm	800mm	5.23kg
CCTM-1080	Metal tray - 1080mm	500mm	1080mm	7.5kg
CCTM-1100	Metal tray - medium	400mm	1100mm	6.9kg
CCTM-1300	Metal tray - 1300mm	550mm	1300mm	8.8kg
CCTM-1400	Metal tray - large	400mm	1400mm	8.3kg

Part code	Description	Width	Length	Depth
CCTM01420-BL	Metal tray	1420mm	500mm	25mm

## FLEXI LITE SLAB AND FOOT KIT



A low cost innovative solution for floor mounting heat pumps. The FLEXI Lite Slab and Foot kits avoid the high cost and time consuming need to construct a concrete base. Each kit comes complete with FLEXI rubber mounting feet, an Ultralite slab, and all the fixings. It can be delivered to site with minimum preparation and can be assembled in minutes. The Ultralite slab is a heavy duty slab with a polystyrene core and a fibre reinforced concrete coating. This makes the slab a fraction of the weight of a traditional concrete slab.



Part code	Description	Specifications
FF-UC3-S	Flexi Lite Kit - small	900 x 600 x 175
FF-UC3-M	Flexi Lite Kit - medium	1050 x 600 x 175
FF-UC3	Flexi-Lite Slab Kit	1200 x 600 x 175
FF-UC3-3	Flexi lite Slab Kit - 3 FEET	1200 x 600 x 175
FF-UC3-XL	Flexi-Lite Slab Kit - extra large	1650 x 865 x 175
FF-UC3-3XL	Flexi-Lite Slab Kit - 3 FEET - extra large	1650 x 865 x 175
FF-UC3-3XL-150	Flexi-Lite Slab Kit - 3 FEET (150mm feet) - extra large	1650 x 865 x 225

## INSTALLING



### FLEXI FOOT - SINGLE

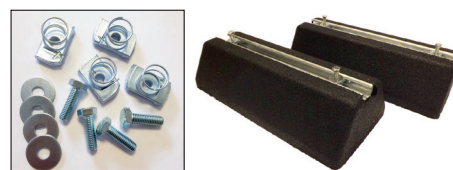
Flexi Foot with 41mm galvanised Steel channel.



Part code	Size L x W x H mm	Weight	Safe working load
FF-250-S	250x185x100	2.8kg	175kg
FF-400-S	400x185x100	4.6kg	280kg
FF-600-S	600x185x100	7.6kg	420kg
FF-600-S-150	600x185x100	7.6kg	420kg
FF-1000-S	1000x185x100	12kg	700kg

### FLEXI FOOT KITS

2 x Flexi feet with fixings pack.



Part code	Description
FF-400-S-KIT	FLEXI-FOOT Kit - 400 (2 x 400mm feet + fixing kit)
FF-600-S-KIT	FLEXI-FOOT Kit - 600 (2 x 600mm feet + fixing kit)
FF-600-S-KIT-3	FLEXI-FOOT Kit - 600 (3 x 600mm feet + fixing kit)
FF-600-3-ASN-KIT	FLEXI-FOOT Kit - 600 narrow (3 x FF-600-ASN + fittings kit)
FF-600-S-150-KIT	FLEXI-FOOT Kit - 600 x 150 high (2 x 600mm x 150mm feet + fixing kit)
FF-600-S-150-KIT-3	FLEXI-FOOT Kit - 600 x 150 high (3x 600mm x 150mm feet + fixing kit)
FF-1000-S-KIT	FLEXI-FOOT Kit - 1000 (2 x 1000mm feet + fixing kit)

### ROTARY ISOLATORS

Our insulated 3 and 4 pole rotary enclosed isolators are CE marked and suitable for disconnecting the power supply to outdoor air source heat pump units.

They are waterproof to IP65 and easy to install and conform to IEC 60947-3. They have a lockable off position and interlocking cover which can be removed only in the off position. Earth and neutral terminals included and M20/25 knockouts up to 63A.



Part code	No of poles	AMPS AC21	AC23 A 240VA	AC23 A 400VA	Cable capacity		Height	Width	Depth
					Solid	Stranded			
IS-3P-20A-S	3	20amp	5.5kW	3.7kW	1-16mm <sup>2</sup>	0.75-10mm <sup>2</sup>	125mm	100mm	120mm
IS-3P-32A-S	3	32 amp	11kW	7.5kW	1-16mm <sup>2</sup>	0.75-10mm <sup>2</sup>	125mm	100mm	120mm
IS-3P-20A	3	20amp	5.5kW	3.7kW	1-16mm <sup>2</sup>	0.75-10mm <sup>2</sup>	175mm	114mm	135mm
IS-3P-32A	3	30amp	11kW	7.5kW	1-16mm <sup>2</sup>	0.75-10mm <sup>2</sup>	175mm	114mm	135mm
IS-3P-40A	3	40amp	15kW	11kW	1-16mm <sup>2</sup>	0.75-10mm <sup>2</sup>	175mm	114mm	135mm
IS-3P-63A	3	63amp	22kW	18.5kW	1-16mm <sup>2</sup>	0.75-10mm <sup>2</sup>	175mm	114mm	135mm

IS-4P-20A-S	4	20amp	5.5kW	3.7kW	1-16mm <sup>2</sup>	0.75-10mm <sup>2</sup>	125mm	100mm	120mm
IS-4P-32A-S	4	32 amp	11kW	7.5kW	1-16mm <sup>2</sup>	0.75-10mm <sup>2</sup>	125mm	100mm	120mm
IS-4P-20A	4	20amp	5.5kW	3.7kW	1-16mm <sup>2</sup>	0.75-10mm <sup>2</sup>	175mm	114mm	135mm
IS-4P-32A	4	32amp	11kW	7.5kW	1-16mm <sup>2</sup>	0.75-10mm <sup>2</sup>	175mm	114mm	135mm
IS-4P-40A	4	40amp	15kW	11kW	1-16mm <sup>2</sup>	0.75-10mm <sup>2</sup>	175mm	114mm	135mm
IS-4P-63A	4	63amp	22kW	18.5kW	1-16mm <sup>2</sup>	0.75-10mm <sup>2</sup>	175mm	114mm	135mm

## INSTALLING



### FILL AND FLUSH FLOW SETTER

Ensures correct flow rate into the heat exchanger and allows for easy filling and draining of the system.

- 1" BSP Female Connectors
- 2 x 14mm Barbed Hose fittings.



Part code	Description
FBV-F&F-1-FF	Fill & Flush Flow setter 1" female/female

## ACCESSORIES

### FLEXI FOOT FIX CLAMP

PART NO FF-FIXCLAMP

The fix clamp allows you to secure flexi feet to the floor using anchor bolts. Fixings not supplied



### ANTI VIBRATION MOUNTING BOLTS

PART NO AVMB-1

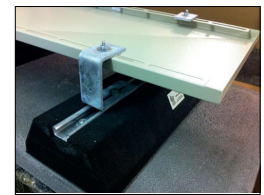
Pack of 4 anti-vibration bolts. Can be used with all DiversiTech International wall brackets



### FLOOR BRACKET KIT

PART NO CCTM-FLOOR-BRKT-KIT

Brackets to allow a condensate tray to be mounted on to flexifeet. The ASHP can then be mounted on the brackets.



Part code	Description
CCTM-FLOOR-BRKT-KIT	Stainless Floor Bracket Kit for drip trays - 4 x brackets and fixings
CCTM-FLOOR-BRKT-KIT3	Stainless Floor Bracket Kit for drip trays - 6 x brackets and fixings

# INSTALLING

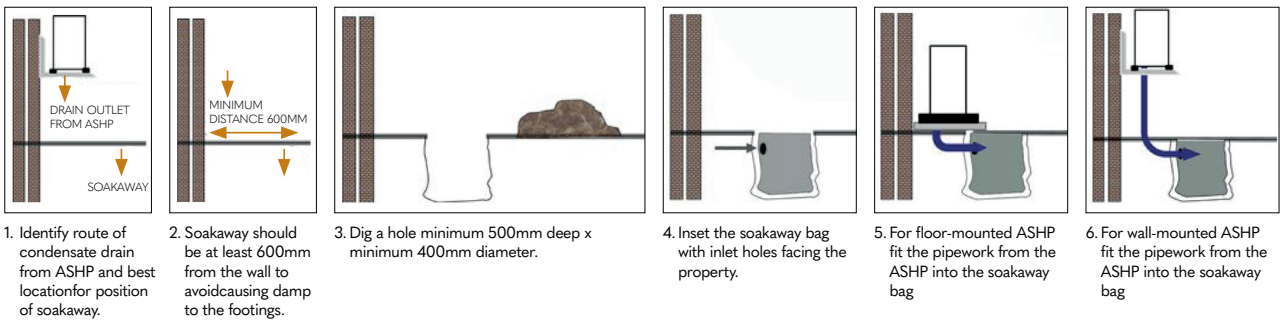
## ACCESSORIES

### ASHP SOAK-AWAY



This unique pre-bagged geo textile soakaway is used to safely dispose of the condensate from all domestic sized air source heat pumps where drain routing is not available. The volume of condensate created from an air source heat pump up to 16kW can be between 10-15 litres per hour up to 2000 litres per year. This method prevents the condensate from flowing onto paths and driveways, which can freeze and cause a slip hazard.

- Alternative method to condensate removal disposal
- Suitable for all models/brands of air source heat pumps
- Made from pre-bagged geo-textile material to prevent soil ingress
- 32mm inlet
- Capacity - 10-15 litres per hour
- Helps with MIS 3005 compliance and complies with BRE 365



Part code	Description	Inlet	Diameter	Height
ASHP-SOAK	Air source heat pump soakaway - pre bagged geo textile with rubber chippings	32mm	400mm	400mm





## FLEXIBLE CONNECTION HOSES

Our flexible hoses meet the requirements of MCS MIS 3005, and help to avoid transmission of vibration through the pipework.

The 28mm hose is sleeved within a stainless steel braid for added protection. All hoses come with 19mm wall insulation which is weatherproof and UV stable.



SOLD IN PAIRS

Part code	Description
FH-300-28-F-ELBOW	Flexible ASHP Hose Pair -300mm x 28mm - 1" FEMALE c/w elbow
FH-300-28-1-1/4ELB	Flexible ASHP Hose Pair -300mm x 28mm - 1 1/4" FEMALE c/w elbow
FH-500-22-F	Flexible ASHP Hose Pair -500mm x 22mm - 1" FEMALE
FH-500-28-F	Flexible ASHP Hose Pair -500mm x 28mm - 1" FEMALE
FH-750-28-F	Flexible ASHP Hose Pair -750mm x 28mm - 1" FEMALE
FH-750-28-M	Flexible ASHP Hose Pair -750mm x 28mm - 1" MALE
FH-750-28-F-ELBOW	Flexible ASHP Hose Pair -750mm x 28mm - 1" FEMALE c/w elbow
FH-750-28-1-1/4F	Flexible ASHP Hose Pair -750mm x 28mm - 1 1/4" FEMALE
FH-750-28-1-1/4M	Flexible ASHP Hose Pair -750mm x 28mm - 1 1/4" MALE



# INSULATING

## PVC COATED EXTERNAL GRADE INSULATION

External condensate pipe work needs to be insulated in a tough PVC coated weather protected covering to avoid UV degradation and animal damage. Boiler installation standards BS 6798-2104 makes specific reference to this grade of insulation. Air source heat pumps and Biomass Boilers tend to be located externally and this hot water pipe work needs to be protected and insulated to avoid heat loss, MIS3005 and building regulations advise a certain thickness of insulation to meet heat loss requirements. Our PVC coated range helps installations comply in both boiler condensate and Air source heat pumps installations.



Part code	Description	Length	Diameter	Thickness	ID
FH-I-1000-15	PVC Coated Weather & Waterproof Insulation	1000mm	41mm	13mm	15mm
FH-I-1000-22	PVC Coated Weather & Waterproof Insulation	1000mm	60mm	19mm	22mm
FH-I-1000-28	PVC Coated Weather & Waterproof Insulation	1000mm	66mm	19mm	28mm
FH-I-1000-28-F	PVC Coated Weather & Waterproof Insulation	1000mm	66mm	19mm	28mm
FH-I-1000-35	PVC Coated Weather & Waterproof Insulation	1000mm	73mm	19mm	35mm
INS-TAPE-10-PK	PVC Coated Weather & Waterproof Tape	250mm	50mm	1mm	10 pack

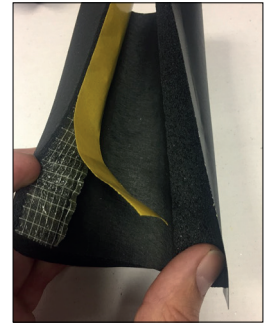
## INSULATING



### PRE SLIT AND SEAL INSULATION

Our new insulation provides outstanding protection against the elements for external pipework on boiler condensate ASHP and Biomass boilers.

The new design offers a quick and secure 'tape free' installation with its peel and seal join and self adhesive wrap-over flap. The tough PVC coating is both weatherproof and UV stable.



Part code	Size	Internal diameter
FH-I-1000-22-SLIT	1000mm L x19mm Thickness	22mm ID
FH-I-1000-28-SLIT	1000mm L x19mm Thickness	28mm ID
FH-I-1000-35-SLIT	1000mm L x19mm Thickness	35mm ID
INS-TAPE-10-PK	PVC Coated Weatherproof Insulation Tape	Length 250mm, Width 50mm x 1mm (pack 10)

### THROUGH THE WALL INSULATION KIT

Pipe work running through the wall will be affected by cold bridging and heat loss if it's not insulated correctly. MIS 3005 requires external pipework to be properly insulated.

This provides both thermal insulation within the wall and comes complete with an elbow section to cover the external copper pipe connection.



Part code	Size
TW-KIT	Through the Wall Insulation Kit



## ASHP GUARDS

DiversiTech International manufacture a range of weather-resistant, steel mesh guards, offering a safe solution to avoid vandalism or accidental damage of your expensive ASHP. The range is ideal for all manufacturers of ASHP units. The unique sliding panel system allows for easy installation, which are secured into place when the front panel is fitted. Back panels are also available to make the guard free standing. For high wall mounted units, we can offer a base panel for full security.



Part code	Size	External dimensions			Internal dimensions			Weight
		Height	Width	Depth	Height	Width	Depth	
CG-750-S	S	950mm	1150mm	750mm	920mm	1120mm	740mm	25kg
CG-750-M	M	1150mm	1150mm	750mm	1120mm	1120mm	740mm	32kg
CG-750-L	L	1450mm	1150mm	750mm	1420mm	1120mm	740mm	33kg
CG-750-INV	INV	1150mm	1450mm	750mm	1120mm	1420mm	740mm	33kg

Part code	Size	Height	Width	Depth	Height	Width	Depth	Weight
CG-900L-INV	L	1150mm	1450mm	900mm	1120mm	1420mm	890mm	34kg
CG-900L-SQ	L-SQ	1450mm	1450mm	900mm	1420mm	1370mm	890mm	51kg
CG-900-XXL	XXL	1800mm	1450mm	900mm	1770mm	1370mm	890mm	60kg

Part code	Size	Height	Width	Depth	Height	Width	Depth	Weight
CG-S	S	750mm	1050mm	460mm	720mm	1020mm	450mm	18kg
CG-M	M	1150mm	1150mm	650mm	1120mm	1120mm	640mm	27kg
CG-L	L	1450mm	1150mm	650mm	1420mm	1120mm	640mm	30kg
CG-XL	XL	1800mm	1150mm	650mm	1770mm	1120mm	640mm	40kg

## WOODEN CONDENSER GUARDS

Made from tanalised, pressure-treated timber. All panels have rounded louvers to optimise air flow. Sized to protect both ASHP and AC units, these guards offer a solution for listed buildings and sites where aesthetics are a consideration. All components are flat-packed for easy transport, and easy-to-install and assemble.



Part code	Description	External dimensions			Internal dimensions		
		Height	Width	Depth	Height	Width	Depth
CG-750S-WOOD	Small Guard	905/960	1275	865	850/890	1050	753
CG-750M-WOOD	Medium Guard	1135/1135	1275	865	1075/1115	1055	753
CG-750M+WOOD	Medium+ Guard	1255/1310	1275	865	1200/1240	1055	753
CG-750L-WOOD	Large Guard	1530/1585	1275	865	1475/1515	1055	753
CG-750LINV-WOOD	Large Inv Guard	1130/1185	1630	865	1075/1115	1405	753
CG-750L+WOOD	Large+ Guard	1600/1655	1275	865	1545/1585	1055	753
CG-750L+INVWOOD	Large+ Inv Guard	1655/1690	1630	865	1580/1620	1405	753

## PROTECTING

### EXTERNAL TRUNKING

Pipework and insulation running from an air source heat pumps should be protected. Our range of trunking comes in a 140mm width with an ivory or black option and accommodates both the insulated flow and return pipework along with any associated cabling.

- Easy to install
- 140mm wide
- Provides a professional and neat finish
- Made from high grade, UV stable, fade resistant PVC
- Available in Ivory and Black
- Protection from the elements, accidental damage and pest damage



Ivory part code	Description	Size (depth x width)
TR-D-140	140mm Trunking (2000mm Length)	90mm x 140mm
TR-WC-140	140mm Wall Cover	90mm x 140mm
TR-CP-140	140mm Straight Connector	90mm x 140mm
TR-IC-140	140mm 90 Degree Internal Bend	90mm x 140mm
TR-FB-140	90 Degree Flat Bend	90mm x 140mm
TR-EC-140	90 Degree External Bend	90mm x 140mm

Black part code	Description	Size (depth x width)
TR-D-140-B	140mm Trunking (2000mm Length)	90mm x 140mm
TR-WC-140-B	140mm Wall Cover	90mm x 140mm
TR-CP-140-B	140mm Straight Connector	90mm x 140mm
TR-EC-140-B	140mm Straight Connector	90mm x 140mm
TR-IC-140-B	140mm 90 Degree Internal bend / External bend	90mm x 140mm
TR-FB-140-B	90 Degree Flat Bend	90mm x 140mm
TR-EC-140-B	90 Degree External Bend	90mm x 140mm

## COIL CLEANING

Heat exchangers can get clogged with dirt and debris. It's essential to keep these clean to maintain optimum efficiency. Pro-green is an environmentally friendly cleaner for ASHP heat exchangers. Available ready-mixed or concentrated.



Part code	Description
G2G-Green+	G2G Green 1 Litre pre-mixed Coil Cleaner Spray
Pro-Green-GB	Pro-Green 5 Litre Concentrated Coil Cleaner

## REFRIGERANT LEAKS

### SUPER SEAL LEAK SEALANT

Super Seal™ is a system additive that will find and seal leaks in the refrigeration circuit of an ASHP. It also has an eliminator to dry any moisture in the system preventing acid/waxing, and dissolves blockages and frees TEV's.

COMPATIBLE WITH ALL OILS AND REFRIGERANTS.



Part code	Description	Contents
947-KIT	Small Systems Up To 5kW	30ml
944-KIT	Medium Systems from 5-17 kW	59ml
948-KIT	Large Systems over 17kW	89ml

### BUBBLE-UP LEAK SPRAY

Leak Seek is a leak detection spray designed to locate refrigerant leaks. Suitable for high and low pressure leaks, this formulation is alcohol and solvent free and has long lasting bubbles.



Part code	Description
AER-B-500	500ml Leak Detection Spray

### ELECTRONIC LEAK DETECTOR - TIF XP-1A

The TIF XP-1A detects all HFC, HFO and HCFC refrigerants, and will find a leak as small as 3 grams per year. Requires 2 x 'C' Batteries.



Part code	Description
TIF-XP1A	TIF Electronic Leak Detector

# NOT ALL INSULATION IS THE SAME!



GREY/SILVER INSULATION  
FOR INTERNAL USE ONLY



PAINTED GREY INSULATION  
SHORT FIELD LIFE AND  
REQUIRES RECOATING  
EVERY FEW YEARS



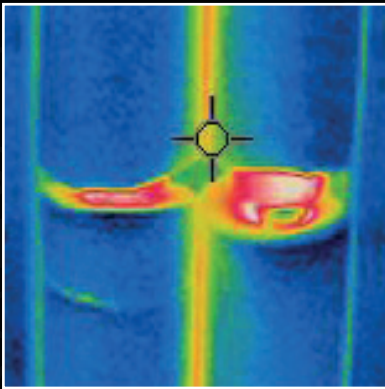
BLACK CLASS 0  
WEATHER-PROOF BUT  
NOT UV STABLE



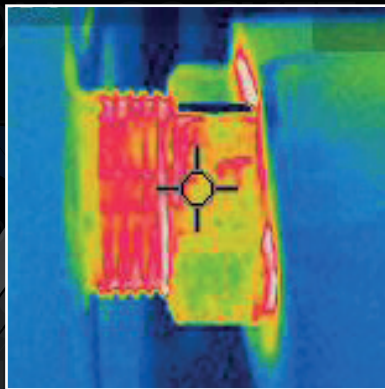
BLACK PVC COATED  
CLASS 0 WEATHER-PROOF  
AND UV STABLE

## ARE YOU GETTING 100% OF HEAT

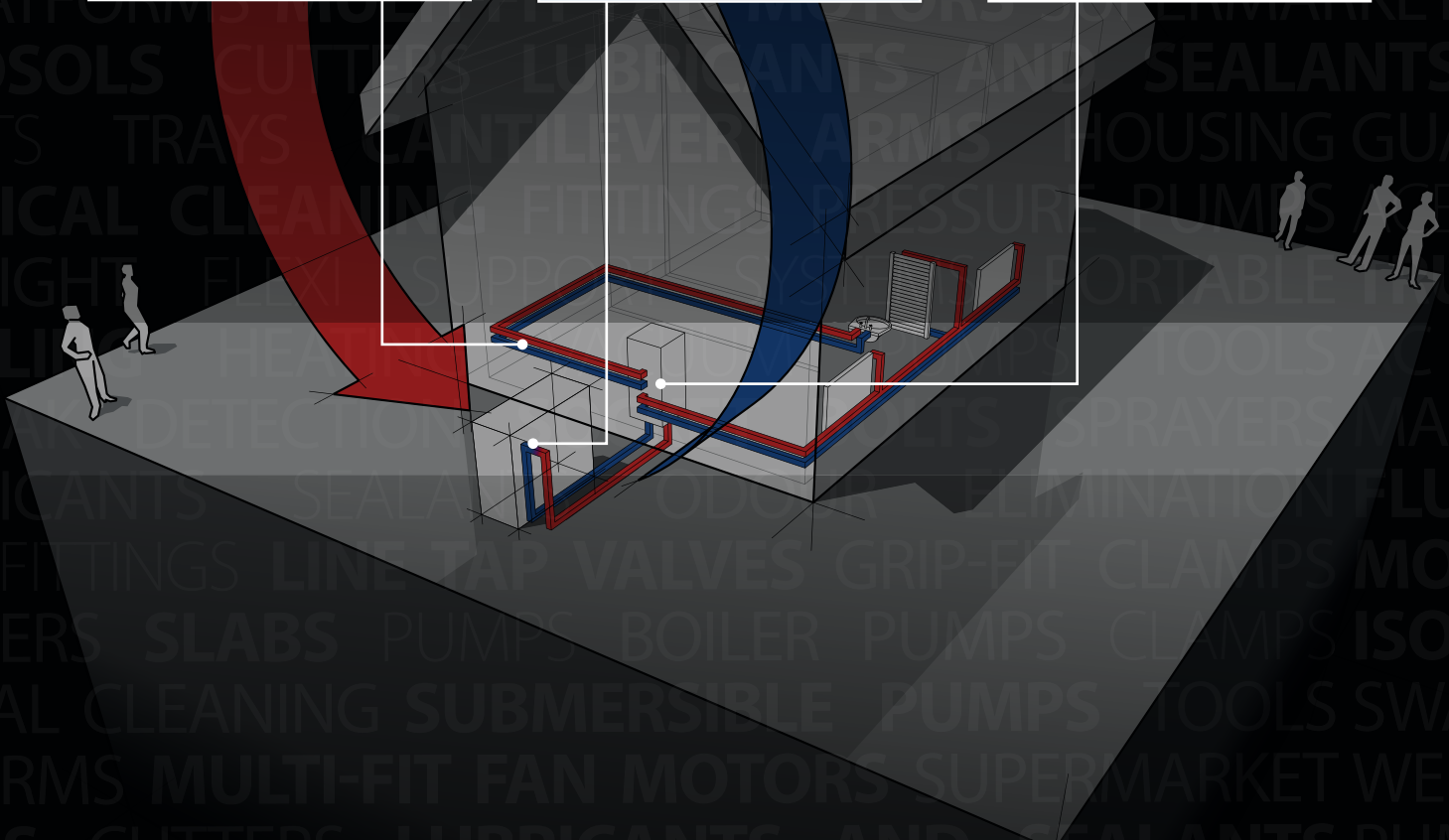
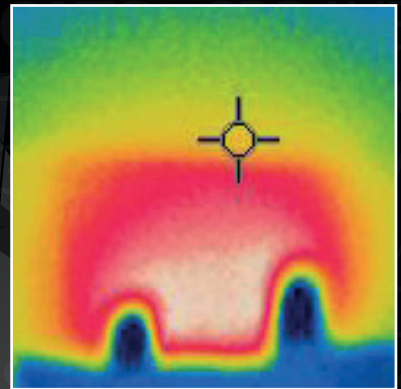
INSULATE PIPEWORK



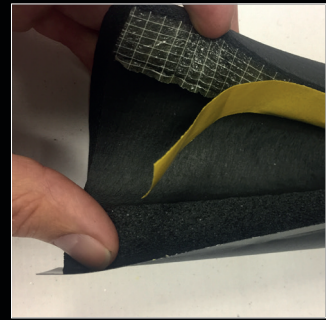
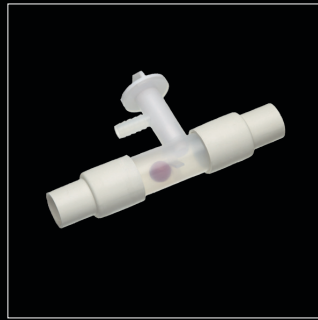
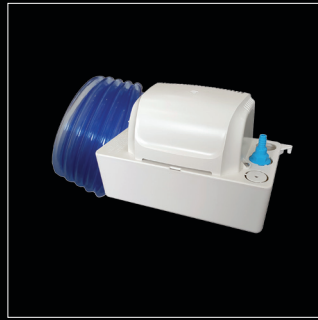
INSULATE CONNECTIONS



INSULATE THROUGH THE WALL



# BOILER & HEATING



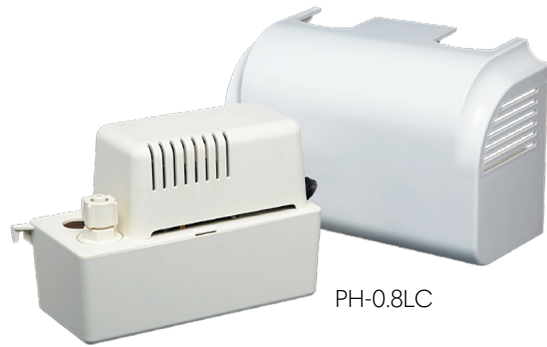
# BOILER CONDENSATE PUMPS



## TANK PUMPS

DiversiTech stock a range of boiler condensate removal pumps that are ideal when the boiler condensate can not be removed via gravity. The tank pumps use a small bore of flexible hose which can be routed above or below doors, windows or under kitchen cabinets.

When routing hose through any area which could be exposed to freezing temperatures, such as lofts, basements or garages, we strongly recommend increasing to at least 32mm plastic pipe and insulating.



Part code	Brand	Description	Max head	Max flow	Drink cycle	Dimensions mm (HxWxD)	Discharge Size (inch)
PH-0.8LC	Pump House	0.8 Litre Tank Pump with Cover	3m	150LPH	200ml	128x210x86	9.5mm (3/8)
PH-0.8L-HL	Pump House	0.8 Litre Tank Pump	6m	270LPH	300ml	122x220x134	9.5mm (3/8)
PH-20-STA	Pump House	2 Litre Tank Pump	5.5M	402LPH	650ML	166x286x135	9.5mm (3/8)



## PRVSURE PRV & CONDENSATE PUMP

This pump is manufactured from high temperature plastic, and comes complete with 10m of higher specification hose.

It meets EN Standards and can handle temperatures up to 110 degrees. Supplied with 10 metres of 'no sag' high grade braided hose. The unique design also cools the PRV discharge so it is safe for use with solvent weld pipework. For installers who are audited or working to EN Standards.

**PRV**Sure



PH-3.8L-HW

Part code	Brand	Description	Max head*	Max flow	Temp	Dimensions mm (HxWxD)	Discharge Size (inch)
PH-3.8L-HW	Pump House	High Temperature & Pressure Relief Pump	8m / 20m	32 LPM (1920LPH)	100°C	350x190x260	15mm

\* meeting BS6798:2014 PRV requirements

## HIGH TEMPERATURE PRESSURE RELIEF PUMP - PH-5L-HW

Designed for unvented cylinder T&P discharge and steam humidifiers. Having one of the largest discharge rates of 32 litres per minute this pump can handle both high temperature up to 100 degrees and high flow rates.

Manufactured in the UK this heavy duty, high temperature tank pump incorporates thermal overload protection and a high level alarm switch.



PH-5L-HW

IN SITU



Part code	Brand	Description	Max head*	Max flow	Temp	Dimensions mm (HxWxD)	Discharge Size (inch)
PH-5L-HW	Pump House	High Temperature & Pressure Relief Pump	8m / 20m	32 LPM (1920LPH)	100°C	350x190x260	15mm

\* Max Heads - 8 metre for flow rates up to 25 Litres per minute / 20 metre for flow rates of 5 Litres per minute

## CONDENSATE NEUTRALISERS



### COMMERCIAL CONDENSATE NEUTRALISER - 20 & 30 LITRES

Installing a neutraliser will reduce the impact of damage to existing boiler concrete drainage gullies and allow for the condensate to be disposed of safely.

The 20-litre stainless steel version can handle condensate from boilers up to 600kW by gravity.

The 30-litre version comes complete with a pump to provide a 5.9 metre lift and a flow rate of up to 900 litres per hour. Both come with lime chippings for instant installation and are suitable for 2.8pH boiler condensate.



BCONDNEUT-20L\*



BCONDNEUT-30L\*

Part code	Brand	Description	Tank capacity	Dimensions mm (HxWxD)	Discharge Size (inch)	Inlet	Weight
BCONDNEUT-20L	Pump House	20 Litre with lime chippings	20L	200x400x300	9.5mm (3/8)	40mm	27kg
BCONDNEUT-30L	Pump House	30 Litre with pump & lime chippings	30L	200x550x305	9.5mm (3/8)	40mm	30kg

\* Modular & bespoke designs are available for boilers over 600kW.

## SUBMERSIBLE DRAINAGE BASEMENT PUMP

Little Giant have the perfect pump solution for the removal of clean, non-aggressive residual water. This pump can be used to assist with the extraction of flood water in properties with basements and can be used with a sump to provide the removal of water below floor level.



Part code	Brand	Description	Max head	Max flow	Dimensions mm (HxWxD)	Discharge size	Weight
6E-CIA-SFS	Little Giant	Drainage Basement Pump	4.6m	9600LPH	258x269x213	38mm (1/2)	12.7kg

## SWIMMING POOL COVER PUMP - APCP-1700

The Little Giant APCP pool cover pump helps safeguard and protect the pool cover from prolonged accumulation of rain or melting snow. This automatic version is certified for use on pool covers, all of which can attach to a standard garden hose for easy water removal.

It removes standing water from pool covers and is ideal for household water transfer applications.

APCP-1700



Part code	Brand	Description	Max head	Max flow	Dimensions mm (HxWxD)	Discharge size	Weight
APCP-1700	Little Giant	Automatic Pool Cover Pump	6.6m	6814LPH	210x305x305	1" FNPT	5.4kg

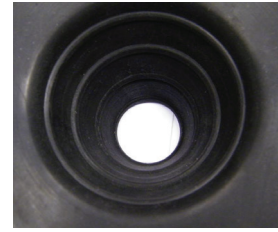
## SOAKAWAY AND CONDENSATE BYPASS VALVE



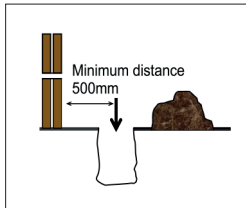
### SOAKAWAY KIT FOR CONDENSING BOILERS

'Soak up' boiler condensate with our soakaway. Where a suitable gravity drain is not available the soakaway can be used in conjunction with 10mm lime chippings.

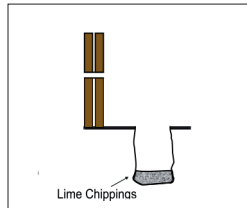
Compatible with the following pipe sizes: 22mm (3/4") overflow, 32mm (1-1/4") and 40mm (1-1/2").



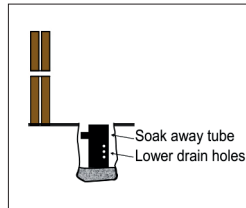
TOP VIEW



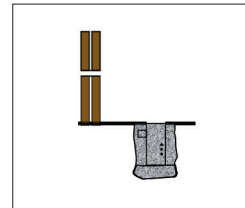
1. DIG HOLE (MIN DEPTH) 400MM X 300MM IN DIAMETER, AT LEAST 500MM FROM THE WALL



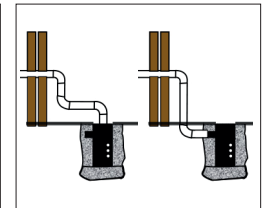
2. FILL THE BOTTOM OF THE HOLE WITH 100MM DEPTH OF LIME CHIPPINGS.



3. INSERT THE SOAKAWAY TUBE WITH THE LOWER DRAIN HOLES FACING AWAY FROM THE PROPERTY.



4. FILL THE REMAINING PART OF THE HOLE AND TUBE WITH LIME CHIPPINGS



5. FEED THE PIPEWORK EITHER INTO THE TOP OR THROUGH THE SIDE OF THE SOAKAWAY.

Part code	Description	Height	Diameter	Inlet (inch)
SOAK1	Soakaway Kit for Condensing Boilers	300mm	110mm	22mm (3/4) 32mm (1-1/4) 40mm (1-1/2)

### FREEZING CONDENSATE SOLUTION BOILER BUOY CONDENSATE BYPASS VALVE

Low cost, easy to install solution to bypass freezing pipes. Cutting a condensate pipe due to freezing has been common place over winter periods. The BB-1 Boiler Buoy condensate bypass valve is a solution that has been designed to be fitted during install, emergency call outs or whilst performing annual service visits.

A red float which when visible, indicates that the condensate pipe has a blockage or may be frozen.

The built in tap allows the householder to drain the condensate away safely and ensures that the heating of the property can continue to work.



Part code	Description	Height	Diameter	Outlet	Hose Length
BB-1	Boiler Buoy - Condensate Bypass Valve	115mm	29mm	9.5mm	1.5m

## ACCESSORIES

DiversiTech International stock a range of adaptors,, connectors, clamps, clips and hoses to connect the unit and pump.



Part code	Description	Pump type application	Pack QTY
adap-1	Condensate drain adaptor - 22mm to 9.5mm (7/8 to 3/8")	Tank pump - 9.5mm (3/8") outlet	Single
ph-pump-nrv	Non-return check valve - 9.5mm (3/8")	Tank pump - 9.5mm (3/8") outlet	Single
anti-syph-kit	Anti Syphon Kit - 9.5mm (3/8")	Tank pump - 9.5mm (3/8") outlet	Single
701-038	Hose 'T' connector - Nylon 9.5mm (3/8")	Tank pump - 9.5mm (3/8") outlet	2-pack
701-032	Hose connector - Nylon 9.5mm (3/8")	Tank pump - 9.5mm (3/8") outlet	2-pack
b-6h	Hose clamp - 6.3mm - 9.5mm (1/4 - 3/8")	All pumps	Single
927033	Hose clip - 9.5mm (3/8")	Tank pump - 9.5mm (3/8") outlet	Single
rvt-3/8	Condensate drain hose - 9.5mm (3/8")	Tabnk pump / hot water pumps	30m

## SELF-SEALING PIPE ADAPTOR

The self-sealing adaptor is used to form a connection between condensate hose and a soil & vent pipe. Drill a 13mm hole (for SVA-3) or a 10mm hole (for SVA-6), insert and twist in to seal the connection.



Part code	Description	Pack QTY
SVA-3	Self-sealing pipe adaptor - 6mm & 9.5mm (1/4 & 3/8) hose to soil & vent pipe	3 Pack
SV-ADAPTOR	Self-sealing pipe adaptor - 6mm & 9.5mm (1/4 & 3/8) hose to soil & vent pipe	Single
SVA-6-3	Self-sealing pipe adaptor - 6mm (1/4) hose to soil & vent pipe	3 pack
SV-ADAPTOR-6	Self-sealing pipe adaptor - 6mm (1/4) hose to soil & vent pipe	Single

## AUDIBLE ALARM

This audible alarm can be wired into all pumps with a high level switch.



Part code	Description	Pack QTY
audible-alarm	Audible alarm for all pumps with a high-level switch	Single

## PORTABLES



### PORTABLES - COOL ONLY & HEAT / COOL PUMP

**A** energy efficiency

The portable air conditioners are suitable for offices, computer rooms and light commercial use. The cooling only model is ideal for cooling flats, conservatories or loft conversions during hot summer months. The heat and cool model can be used as an energy efficient form of heating along with cooling. The units come with a hose, tray, remote control and wall kit. Spare parts are available upon request - please enquire for more details.



PAC-C-12-R290

Part code	Description	Cool capacity Btu/kW	Heat capacity Btu/kW	Watts	Amps	Air flow volume	EER	COP	Sound power level dBA
PAC-C-12-R290	Portable (cooling)	12,000 / 3.5	N/A	1350	5.9	420m <sup>3</sup> /h	2.6	N/A	56
PAC-H-12-R290	Portable (heat pump)	12,000 / 3.5	N/A	1350	5.9	420m <sup>3</sup> /h	2.6	N/A	56

Part code	Description	Height	Width	Depth	Weight	Hose length	Refrigerant	Cooling area
PAC-C-12-R290	Portable (cooling)	730mm	485mm	360mm	28kg	1.5m	R290	25-30m <sup>2</sup>
PAC-H-12-R290	Portable (heat pump)	730mm	485mm	360mm	28kg	1.5m	R290	25-30m <sup>2</sup>

## PRE-SLIT AND SEAL WEATHERPROOF INSULATION

### THROUGH WALL INSULATION KIT

Running pipe work from an externally mounted air source heat pump or biomass boiler into a property requires the pipe work to be run through the exterior wall. The hot pipe work will be affected by cold bridging and heat loss if it is not insulated correctly. MIS 3005 requires external pipe work to be adequately insulated. This kit provides both thermal insulation within the wall and comes complete with an elbow section to cover the external copper pipe connection.



1. SELECT A 65MM CORE DRILL.



2. DRILL TWO 65MM HOLES NEXT TO EACH OTHER.



3. INSERT THE PVC SLEEVE INSULATION, RECESS IT TO ALLOW FOR THE ELBOW TO BE LOCATED.



4. FIT THE ELBOW OVER THE COPPER PIPES.

Part code	Description
tw-kit	Sleeved PVC coated insulation kit - 19mm wall thickness (2 x elbow and 2 x straight connectors)

## FUSED SPUR SWITCHES

Part code	Description
X-FSBBMC	Fused Spur Metal Clad - with Back Box
X-FSNBBMC	Fused Spur Metal Clad - with Back Box & Neon
X-FS	Fused Spur Plastic - without neon
X-FSN	Fused Spur Plastic - with neon
X-BBSM-25	Back Box Surface Mount - 25mm
X-BBSM-35	Back Box Surface Mount - 35mm
X-BBSM26-25	Back Box 2 Gang - 25mm
X-BBSM2G-35	Back Box 2 Gang - 35mm
X-BSPS-10A	Plug Socket - 10 Amp
X-2GSW2W-10A	Switch 2 Gang - 10 Amp
X-3GSW2W-10A	Switch 3 Gang - 10 Amp
X-1GDPSW-13A	Switch 1 Gang - 13 Amp
X-2GDPSW-13A	Switch 2 Gang - 13 Amp
X-DPSW-20A	Switch Double Pole - 20 Amp
X-PT	Plug Top - 13 Amp



FUSED SPUR METAL



FUSED SPUR PLASTIC

## SERVICE AND MAINTENANCE

### DRAINGUN

Blocked drain line - no problem with our DrainGun™. This lightweight, portable tool is designed to unblock condensate drain lines and other pipework instantly.

Simply insert a CO<sup>2</sup> cartridge in to the DrainGun and with a press of the trigger, SWOOSH, 800 psi of food grade CO<sup>2</sup> blows the blockage out.



Part code	Description	Size
GG-1	Drain Gun Line Cleaner	Single Pack
GGC-6	Drain Gun - Pack of 6, CO <sup>2</sup> Cartridges	Pack of 6
GG-1A	Drain Gun - Adaptor Kit - for larger tubes, oil lines and 90 degree angles	3 adaptors
GG-1H	Drain Gun - Hose Assembly	Single Pack

### MAP+

Map+ is Propane, Propene and Dimethyl Ether Mixture - a high quality gas for soldering and brazing (for professional use only).

Use only with torches designed for MAP GAS. Never use with standard propane appliances such as lanterns, stoves, torches etc.



Part code	Description	Size
MAP+	MAP+ - Propane, Propene & Dimethyl Ether Mixture	453g

## TORCHES



### CLIGHT - PIVOT™ TORCHES

The Pivot™ range has a 360 degree swivel hook and is magnetic at the base and back. Available in colours Yellow/Black and Camo. All models are supplied with three AAA batteries.



Part code	Description	Colour	Lumens	UOM	Master QTY
111114	Pivot - 5 LED Work Light	Yellow/Black	240	Each	Pack of 9
111115	Pivot Mini - 18 LED Front Light / 3 LED Top	Yellow/Black	120	Each	Pack of 12
111117	Pivot Mini - 18 LED Front Light / 3 LED Top	Camo	120	Each	Pack of 12
24-458	Pivot 33 - 28 LED Front Light / 5 LED Top	Yellow/Black	160	Each	Pack of 9
24-460	Pivot 33 - 28 LED Front Light / 5 LED Top	Camo	160	Each	Pack of 9

## TAPES



### ABRASIVE CLOTH

A high quality aluminium oxide 120 grit abrasive cloth, that can be used wet or dry to thoroughly clean steel and copper tubing.



Part code	Description	UOM	Master Qty
SC-10	Abrasive Cloth - 120 Grit - 1-1/2" x 10 yards	1	1

### GRIP-CUT CLOTH

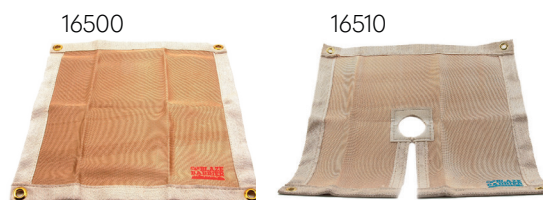
A 180 grit open mesh sand screen cloth with aluminium oxide bonding, that is 100% waterproof. Can be used by hand or with portable tools and is most effective where clogging would be a problem such as soft materials.



Part code	Description	UOM	Master Qty
SCM-5	Grip- Cut Open Mesh Sand Screen Cloth - 1-1/2" x 5 yards	1	1

### BRAZE BARRIER MATS

This flame barrier drop cloth withstands temperatures to (1600°C) 3000°F No asbestos. Protects walls, floors, equipment, components and adjacent surfaces from torch flames when soldering, brazing or welding.



Part code	Description	UOM	Master Qty
16500	Plain Braze Barrier Mat 18 " x 18"	1	1
16510	Keyhole Braze Barrier Mat - 18" x 18"	1	1



## COOL-WELD™ HEAT BARRIER SPRAY

Cool-Weld™ is a spray on gel heat shield for soldering, sweating and welding. Ideal for use on filter driers, pipes, valves, sheet metals, etc. Can be used on porous surfaces such as fabrics or drywall. As long as there is some Cool-Weld™ present the surface will resist charring.



Part code	Description	UOM	Master Qty
COOLWELD-32	Cool-Weld Heat Barrier Spray - 32oz with spray top	Each	12

## TELESCOPIC INSPECTION MIRRORS

Fast, accurate visual inspection of hidden areas with an almost limitless number of positions. Double ball joint links swivel mirrors for viewing 360 degrees. Precision engineered links are made from tempered spring steel to withstand the stresses of constant repositioning. Moves freely and holds in the desired position.



Part code	Description	Qty
M-1	Mirror 1-1/4" circular - extends 32mm - 463mm ( 6-1/4" to 18-1/4")	1
M-2	Mirror 57mm (2-1/4") circular - extends 254mm - 355mm (10" to 14" )	1
M-3	Mirror 54mm x 183mm (2-1/8" x 3-1/2") rectangular - extends 285mm - 387mm (11-1/4" to 15-1/4" )	1
M-4	Mirror 22mm ( 7/8") Circular - extends 165mm (6 -1/2")	1
M-5	Mirror 25mm x 50mm (1" x 2") Oval - extends 191mm (8-1/2")	1

## WYPALL CLOTHS

Heavy duty towels that absorb grease, oil, water and solvents from floors, hands, parts, tools and machinery.



Part code	Description	UOM	Master Qty
5-05790	WypAll Plus Towels - White	Each	Box of 9

## ACCESSORIES



### EXPANDING FOAM SEALANT

A one component closed-cell expanding polyurethane foam sealant that is tack free in 20 minutes. Can be painted to prevent UV damage after 12 hours of drying time. Used to seal around doors, windows, pipes, ducts and vents - in fact, virtually anywhere.



Part code	Description	UOM	Master Qty
01714	Foam Sealant - 355ml	Each	12
01724	Foam Sealant - 591ml	Each	12

### SILICONE SEALANTS

Available in clear or white, DiversiTech silicone sealants are 100% food grade and can be used in applications for continuous use up to 232°C. It is UV and water resistant and has long term flexibility.



Part code	Description	UOM	Master Qty
01714	Foam Sealant - 355ml	Each	12
01724	Foam Sealant - 591ml	Each	12

### DIVERSI-GUM SEALING COMPOUND

Diversi-Gum is a non-hardening, non-corrosive sealing compound that is immediately paintable and has a temperature usage range between -4°C and 49°C. It is ideal for sealing openings through walls from pipe work.



Part code	Description	UOM	Master Qty
6-202-1	Diversi-Gum Sealing compound 450g slug	Each	24
6-202-2	Diversi-Gum Sealing compound 900g slug	Each	20

### FLEXI PATCH™

Flexi-Patch™ is an easy to use flexible repair patch ideal for repairing almost any surface. It cures quickly using only UV light from sunlight or a UV flashlight for a long lasting, permanent repair.

Flexi-Patch is a fiberglass-reinforced polyester ideal for use on PVC, plastics, metal, wood, concrete and more. It's the easy way to permanently patch almost any surface. It dries hard for permanent repair. Can be drilled and painted once dry. Capable of handling pressures upto 500psi and temperature range -26°C to 150°C



Part code	Description	UOM	Master Qty
FP-36	Flexi Patch Fibreglass repair patch - 75mm x 150mm - 10 per pack	Each	20

## PLASTIC PIPE FITTINGS



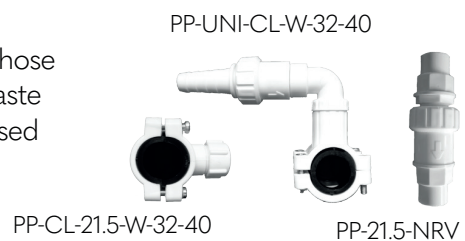
Code White	Code Black	Description	Pipe Size (mm)	Quantity
PP-90EL-21.5-W	PP-90EL-21.5-B	Plastic Pipe - 90 Degree Elbow	21.5mm	Pack of 10
PP-45EL-21.5-W	PP-45EL-21.5-B	Plastic Pipe - 45 Degree Elbow	21.5mm	Pack of 10
PP-CON-21.5-W	PP-CON-21.5-B	Plastic Pipe - Straight Connector	21.5mm	Pack of 10
PP-T-21.5-W	PP-T-21.5-B	Plastic Pipe - T Connector	21.5mm	Pack of 10
PP-PIPE-21.5-W	PP-PIPE-21.5-B	Plastic Pipe	21.5mm	3 metre

"Code White"	"Code Black"	"Code Grey"	Description	"Pipe Size (mm)"	Quantity
PP-CL-15-W			Plastic Pipe Clip	15mm	Pack of 100
PP-CL-22-W			Plastic Pipe Clip	22mm	Pack of 100
PP-CL-28-W			Plastic Pipe Clip	28mm	Pack of 100
PP-CL-32-W	PP-CL-32-B	PP-CL-32-G	Plastic Pipe Clip	32mm	Pack of 10
PP-CL-40-W	PP-CL-40-B	PP-CL-40-G	Plastic Pipe Clip	40mm	Pack of 10

Code	Description	Size	Quantity
X-SOLCEM	Solvent Cement	250ml	1

## PLASTIC PIPE CLAMPS / NON-RETURN VALVES

Our plastic pipe clamps are designed to connect overflow or waste hose pipe to an existing 32mm (1-1/4") or 40mm (1-1/2") pipe. To avoid waste water flowing back up the pipe work our non-return valves can be used on overflow pipe or waste hose pipe.



Part code	Description	Quantity
PP-CL-21.5-W-32-40	Pipe Clamp Kit - 21.5mm overflow to 32mm (1-1/4") and 40mm (1-1/2")	1
PP-UNI-CL-W-32-40	Pipe Clamp - Hose Connector 32mm (1-1/4") and 40mm (1-1/2")	1
PP-21.5-NRV	Non-Return Valve - for 21.5mm overflow pipe	1
PP-UNI-NRV	Non-Return Valve - with Hose Fitting	1

# PLASTIC PIPE FITTINGS



## STRAP ON BOSS

Using a Strap On Boss allows you to add condensate drain pipe to a soil and vent pipe. For adding a waste connection into an existing PVCu and cast iron soil pipe. For use with 32mm or 40mm pipes. Must be solvent welded into position.



Part code	Description	Colour	Quantity
PP-SOBOSS-110-G-32	Strap On Boss - 110mm Pipe with 32mm (1-1/4") Rubber	GREY	1
PP-SOBOSS-110-G-40	Strap On Boss - 110mm Pipe with 40mm (1-1/2") Rubber	GREY	1
PP-SOBOSS-110-B-32	Strap On Boss - 110mm Pipe with 32mm (1-1/4") Rubber	BLACK	1
PP-SOBOSS-110-B-40	Strap On Boss - 110mm Pipe with 40mm (1-1/2") Rubber	BLACK	1
X-PVCU-SOBSC-110MM	Strap On Boss - 110mm PVCU		10

## PVC PIPES

PVC-U - ELBOW 3/4" 90 DEGREE



PVC-U - 3/4" T PIECE



PVC-U - 3/4" SOCKET



PVC-U - 3/4" MACLOW CLIPS



Part code 3/4"	Part code 1"	Part code 1-1/4"	Description	Quantity
X-PVCU-3/4E-45		X-PVCU-1-1/4E-45	PVCU - Elbow - 45 Degree	10
X-PVCU-3/4-45T		X-PVCU-1-1/4-45T	PVCU - 45 Degree T	10
X-PVCU-3/4E-90	X-PVCU-1E-90	X-PVCU-1-1/4E-90	PVCU - Elbow - 90 Degree	10
X-PVCU-3/4-MAC	X-PVCU-1-MAC	X-PVCU-1-1/4-MAC	PVCU - MacLow Clips	10
X-PVCU-3/4-EC			PVCU - End Cap	10
X-PVCU-3/4P-3M	X-PVCU-1P-3M	X-PVCU-1-1/4-3M	PVCU - Pipe - 3 Metre Length	10
X-PVCU-3/4-SOC	X-PVCU-1-SOC	X-PVCU-1-1/4-SOC	PVCU - Socket	10
X-PVCU-3/4-CAP		X-PVCU-1-1/4-CAP	PVCU - Threaded Cap	10
X-PVCU-3/4-PIN		X-PVCU-1-1/4-PIN	PVCU - Pin / Barrel	10
X-PVCU-3/4-R		X-PVCU-1-1/4-R	PVCU - Reducer	10
X-PVCU-3/4-RE		X-PVCU-1-1/4-RE	PVCU - Rodding Eye	10
X-PVCU-3/4-TP	X-PVCU-1TP	X-PVCU-1-1/4-TP	PVCU - T Piece	10

## BY CODE

PART CODE	ITEM	SECTION	PAGE	PART CODE	ITEM	SECTION	PAGE
1714	Foam Sealant - 355ml	SEALANT	26	CCTM-1080	Metal tray - 1080mm	TRAYS	5
1714	Foam Sealant - 355ml	SEALANT	26	CCTM-1100	Metal tray - medium	TRAYS	5
1724	Foam Sealant - 591ml	SEALANT	26	CCTM-1300	Metal tray - 1300mm	TRAYS	5
1724	Foam Sealant - 591ml	SEALANT	26	CCTM-1400	Metal tray - large	TRAYS	5
16500	Plain Braze Barrier Mat	TAPES	24	CCTM-800	Metal tray - small	TRAYS	5
16510	Keyhole Braze Barrier Mat	TAPES	24	CCTM-FLOOR-BRKT-KIT	Stainless Floor Bracket Kit for drip trays	ACCESSORIES	7
111114	Pivot Yellow/Black	TORCHES	24	CCTM-FLOOR-BRKT-KIT3	Stainless Floor Bracket Kit for drip trays	ACCESSORIES	7
111115	Pivot Mini Yellow/Black	TORCHES	24	CCTM01420-BL	Metal tray	TRAYS	5
111117	Pivot Mini Camo	TORCHES	24	CG-750-INV	Guard INV	GUARDS	11
927033	Hose clip	PUMP ACCESSORIES	21	CG-750-L	Guard L	GUARDS	11
24-458	Pivot 33 Yellow/Black	TORCHES	24	CG-750-M	Guard M	GUARDS	11
24-460	Pivot 33 Camo	TORCHES	24	CG-750-S	Guard S	GUARDS	11
5-05790	WypAll Plus Towels	CLOTHS	25	CG-750L-WOOD	Wooden guard large	GUARDS	11
6-202-1	Diversi-Gum Sealing compound	SEALANT	26	CG-750L+INVWOOD	Wooden guard large+ INV	GUARDS	11
6-202-2	Diversi-Gum Sealing compound	SEALANT	26	CG-750L+WOOD	Wooden guard large+	GUARDS	11
6E-CIA-SFS	Little Giant Drainage Basement Pump	DRAINAGE PUMPS	19	CG-750LINV-WOOD	Wooden guard large INV	GUARDS	11
701-032	Hose connector - Nylon 9.5mm (3/8")	PUMP ACCESSORIES	21	CG-750M-WOOD	Wooden guard medium	GUARDS	11
701-038	Hose "T" connector - Nylon 9.5mm (3/8")	PUMP ACCESSORIES	21	CG-750M+WOOD	Wooden guard medium+	GUARDS	11
944-KIT	Super Seal Medium Systems from 5-17 kW	CHEMICALS	13	CG-750S-WOOD	Wooden guard small	GUARDS	11
947-KIT	Super Seal Small Systems Up To 5kW	CHEMICALS	13	CG-900-XXL	Guard XXL	GUARDS	11
948-KIT	Super Seal Large Systems over 17kW	CHEMICALS	13	CG-900L-INV	Guard L	GUARDS	11
adap-1	Condensate drain adaptor	PUMP ACCESSORIES	21	CG-900L-SQ	Guard L-SQ	GUARDS	11
AER-B-500	Leak Detection Spray 500ml	LEAK DETECTION	13	CG-L	Guard L	GUARDS	11
anti-syph-kit	Anti Syphon Kit - 9.5mm (3/8")	PUMP ACCESSORIES	21	CG-M	Guard M	GUARDS	11
APCP-1700	Little Giant Automatic Pool Cover Pump	DRAINAGE PUMPS	19	CG-S	Guard S	GUARDS	11
ASHP-SOAK	Air source heat pump soakaway	ACCESSORIES	8	CG-XL	Guard XL	GUARDS	11
audible-alarm	Audible alarm	ALARMS	21	COOLWELD-32	Cool-Weld Heat Barrier Spray	WELDING	25
AVMB-1	Anti Vibration Mounting Bolts	ACCESSORIES	7	FBV-F&F-1-FF	Fill & Flush Flow setter	VALVE	7
b-6h	Hose clamp - 6.3mm - 9.5mm (1/4 - 3/8")	PUMP ACCESSORIES	21	FF-1000-S	Flexi Foot 1000	MOUNTING	6
BB-1	Boiler Buoy - Condensate Bypass Valve	BYPASS VALVE	20	FF-1000-S-KIT	FLEXI-FOOT Kit - 1000	MOUNTING	6
BCONDNEUT-20L	PH 20 Litre with lime chippings	NEUTRALISERS	18	FF-250-S	Flexi Foot 250	MOUNTING	6
BCONDNEUT-30L	PH 30 Litre with pump & lime chippings	NEUTRALISERS	18	FF-400-S	Flexi Foot 400	MOUNTING	6
CBR2-L	Type 2 Bracket - Large	BRACKETS	4	FF-400-S-KIT	FLEXI-FOOT Kit - 400	MOUNTING	6
CBR2-M	Type 2 Bracket - Medium	BRACKETS	4	FF-600-3-ASN-KIT	FLEXI-FOOT Kit - 600 narrow	MOUNTING	6
CBR2-S	Type 2 Bracket - Small	BRACKETS	4	FF-600-F	Flexi Foot 600	MOUNTING	6
CBR2-XL	Type 2 Bracket - XL	BRACKETS	4	FF-600-S-150	Flexi Foot 600-S-150	MOUNTING	6
CBR2-XL-3A	Type 2 Bracket - XL (3 arms)	BRACKETS	4	FF-600-S-150-KIT	FLEXI-FOOT Kit - 600 x 150 high	MOUNTING	6
CBR2-XL-3A-BL	Type 2 Bracket - XL (3 arms)	BRACKETS	4	FF-600-S-150-KIT-3	FLEXI-FOOT Kit - 600 x 150 high	MOUNTING	6
CBR2-XL-BL	Type 2 Bracket - XL	BRACKETS	4	FF-600-S-KIT	FLEXI-FOOT Kit - 600	MOUNTING	6
CBR2-XXL	Type 2 Bracket - Double XL	BRACKETS	4	FF-600-S-KIT-3	FLEXI-FOOT Kit - 600	MOUNTING	6
CBR2-XXL-3A	Type 2 Bracket - Double XL (3 arms)	BRACKETS	4	FF-FIXCLAMP	Flexi Foot Fix Clamp	ACCESSORIES	7
CBR2-XXL-3A-BL	Type 2 Bracket - Double XL (3 arms)	BRACKETS	4	FF-UC3	Flexi-Lite Slab Kit	MOUNTING	5
CBR2-XXL-3A-BL-D	Type 2 Bracket - Double XL (3 arms)	BRACKETS	4	FF-UC3-3	Flexi lite Slab Kit - 3 FEET	MOUNTING	5
CBR2-XXL-3A-BL-D	Type 2 Bracket - Double XL (3 arms)	BRACKETS	4	FF-UC3-3XL	Flexi-Lite Slab Kit - 3 FEET - extra large	MOUNTING	5

## BY CODE

PART CODE	ITEM	SECTION	PAGE	PART CODE	ITEM	SECTION	PAGE
FF-UC3-3XL-150	Flexi-Lite Slab Kit - 3 FEET - extra large	MOUNTING	5	M-5	Mirror 25mm x 50mm	MIRRORS	25
FF-UC3-M	Flexi Lite Kit - medium	MOUNTING	5	MAP+	MAP+	GAS	23
FF-UC3-S	Flexi Lite Kit - small	MOUNTING	5	PAC-C-12-R290	Portable (cooling)	PORTABLE MACHINES	22
FF-UC3-XL	Flexi-Lite Slab Kit - extra large	MOUNTING	5	PAC-H-12-R290	Portable (heat pump)	PORTABLE MACHINES	22
FH-300-28-1-1/4ELB	Flexible Hose Pair -300mm x 28mm	HOSES	9	PH-0.8L-HL	PH 0.8 Litre Tank Pump	CONDENSATE PUMPS	16
FH-300-28-F-ELBOW	Flexible Hose Pair -300mm x 28mm	HOSES	9	PH-0.8LC	PH 0.8 Litre Tank Pump with Cover	CONDENSATE PUMPS	16
FH-500-22-F	Flexible Hose Pair -500mm x 22mm	HOSES	9	PH-20-STA	PH 2 Litre Tank Pump	CONDENSATE PUMPS	16
FH-500-28-F	Flexible Hose Pair -500mm x 28mm	HOSES	9	PH-3.8L-HW	PH High Temperature Pressure Relief Pump	HIGH TEMPERATURE PUMPS	17
FH-750-28-1-1/4F	Flexible Hose Pair -750mm x 28mm	HOSES	9	PH-5L-HW	PH High Temperature Pressure Relief Pump	HIGH TEMPERATURE PUMPS	17
FH-750-28-1-1/4M	Flexible Hose Pair -750mm x 28mm	HOSES	9	ph-pump-nrv	Non-return check valve - 9.5mm (3/8")	PUMP ACCESSORIES	21
FH-750-28-F	Flexible Hose Pair -750mm x 28mm	HOSES	9	PP-21.5-NRV	Non-Return Valve	VALVES	27
FH-750-28-F-ELBOW	Flexible Hose Pair -750mm x 28mm	HOSES	9	PP-45EL-21.5-B	Plastic Pipe - 45 Degree Elbow	PLASTIC PIPE FITTINGS	27
FH-750-28-M	Flexible Hose Pair -750mm x 28mm	HOSES	9	PP-45EL-21.5-W	Plastic Pipe - 45 Degree Elbow	PLASTIC PIPE FITTINGS	27
FH-I-1000-15	PVC Coated Weather & Waterproof Insulation	INSULATION	9	PP-90EL-21.5-B	Plastic Pipe - 90 Degree Elbow	PLASTIC PIPE FITTINGS	27
FH-I-1000-22	PVC Coated Weather & Waterproof Insulation	INSULATION	9	PP-90EL-21.5-W	Plastic Pipe - 90 Degree Elbow	PLASTIC PIPE FITTINGS	27
FH-I-1000-22-SLIT	Pre slit and seal 1000mm L x19mm Thickness	INSULATION	10	PP-CL-15-W	Plastic Pipe Clip	PLASTIC PIPE FITTINGS	27
FH-I-1000-28	PVC Coated Weather & Waterproof Insulation	INSULATION	9	PP-CL-21.5-W-32-40	Pipe Clamp Kit	PIPE CLAMPS	27
FH-I-1000-28-SLIT	Pre slit and seal 1000mm L x19mm Thickness	INSULATION	10	PP-CL-22-W	Plastic Pipe Clip	PLASTIC PIPE FITTINGS	27
FH-I-1000-35	PVC Coated Weather & Waterproof Insulation	INSULATION	9	PP-CL-28-W	Plastic Pipe Clip	PLASTIC PIPE FITTINGS	27
FH-I-1000-35-SLIT	Pre slit and seal 1000mm L x19mm Thickness	INSULATION	10	PP-CL-32-B	Plastic Pipe Clip	PLASTIC PIPE FITTINGS	27
FP-36	Flexi Patch Fibreglass repair patch	REPAIR PATCH	26	PP-CL-32-G	Plastic Pipe Clip	PLASTIC PIPE FITTINGS	27
G2G-Green+	G2G Green 1L pre-mixed Coil Cleaner Spray	CHEMICALS	13	PP-CL-32-W	Plastic Pipe Clip	PLASTIC PIPE FITTINGS	27
GG-1	Drain Gun Line Cleaner	DRAIN LINE CLEANER	23	PP-CL-40-B	Plastic Pipe Clip	PLASTIC PIPE FITTINGS	27
GG-1A	Drain Gun - Adaptor Kit	DRAIN LINE CLEANER	23	PP-CL-40-G	Plastic Pipe Clip	PLASTIC PIPE FITTINGS	27
GG-1H	Drain Gun - Hose Assembly	DRAIN LINE CLEANER	23	PP-CL-40-W	Plastic Pipe Clip	PLASTIC PIPE FITTINGS	27
GGC-6	Drain Gun - Pack of 6, CO2 Cartridges	DRAIN LINE CLEANER	23	PP-CON-21.5-B	Plastic Pipe - Straight Connector	PLASTIC PIPE FITTINGS	27
INS-TAPE-10-PK	PVC Coated Weather & Waterproof Tape	INSULATION	9	PP-CON-21.5-W	Plastic Pipe - Straight Connector	PLASTIC PIPE FITTINGS	27
INS-TAPE-10-PK	PVC Coated Weatherproof Insulation Tape	INSULATION	10	PP-PIPE-21.5-B	Plastic Pipe	PLASTIC PIPE FITTINGS	27
IS-3P-20A	Rotary isolators 3-pole	ISOLATORS	6	PP-PIPE-21.5-W	Plastic Pipe	PLASTIC PIPE FITTINGS	27
IS-3P-20A-S	Rotary isolators 3-pole	ISOLATORS	6	PP-SOBOSS-110-B-32	Strap On Boss	PIPES	28
IS-3P-32A	Rotary isolators 3-pole	ISOLATORS	6	PP-SOBOSS-110-B-40	Strap On Boss	PIPES	28
IS-3P-32A-S	Rotary isolators 3-pole	ISOLATORS	6	PP-SOBOSS-110-G-32	Strap On Boss	PIPES	28
IS-3P-40A	Rotary isolators 3-pole	ISOLATORS	6	PP-SOBOSS-110-G-40	Strap On Boss	PIPES	28
IS-3P-63A	Rotary isolators 3-pole	ISOLATORS	6	PP-T-21.5-B	Plastic Pipe	PLASTIC PIPE FITTINGS	27
IS-4P-20A	Rotary isolators 4-pole	ISOLATORS	6	PP-T-21.5-W	Plastic Pipe	PLASTIC PIPE FITTINGS	27
IS-4P-20A-S	Rotary isolators 4-pole	ISOLATORS	6	PP-UNI-CL-W-32-40	Pipe Clamp	PIPE CLAMPS	27
IS-4P-32A	Rotary isolators 4-pole	ISOLATORS	6	PP-UNI-NRV	Non-Return Valve - with Hose Fitting	VALVES	27
IS-4P-32A-S	Rotary isolators 4-pole	ISOLATORS	6	Pro-Green-GB	Pro-Green 5 Litre Concentrated Coil Cleaner	CHEMICALS	13
IS-4P-40A	Rotary isolators 4-pole	ISOLATORS	6	rvt-3/8	Condensate drain hose - 9.5mm (3/8")	PUMP ACCESSORIES	21
IS-4P-63A	Rotary isolators 4-pole	ISOLATORS	6	SC-10	Abrasive Cloth - 120 Grit - 1-1/2" x 10 yards	TAPES	24
M-1	Mirror 1-1/4" circular	MIRRORS	25	SCM-5	Grip-Cut Open Mesh Sand Screen Cloth	TAPES	24
M-2	Mirror 57mm (2-1/4")	MIRRORS	25	SOAK1	Soakaway Kit for Condensing Boilers	SOAKAWAY	20
M-3	Mirror 54mm x 183mm	MIRRORS	25	SV-ADAPTOR	Self-sealing pipe adaptor	PIPE ADAPTORS	21
M-4	Mirror 22mm (7/8")	MIRRORS	25	SV-ADAPTOR-6	Self-sealing pipe adaptor	PIPE ADAPTORS	21

## BY CODE

PART CODE	ITEM	SECTION	PAGE	PART CODE	ITEM	SECTION	PAGE
SVA-3	Self-sealing pipe adaptor	PIPE ADAPTORS	21	X-PVCU-1-MAC	PVCU - Maclow Clips	PVC PIPES	28
SVA-6-3	Self-sealing pipe adaptor	PIPE ADAPTORS	21	X-PVCU-1-SOC	PVCU - Socket	PVC PIPES	28
TIF-XPIA	TIF Electronic Leak Detector	LEAK DETECTION	13	X-PVCU-1E-90	PVCU - Elbow - 90 Degree	PVC PIPES	28
TR-CP-140	Ivory trunking 140mm Straight Connector	TRUNKING	12	X-PVCU-1P-3M	PVCU - Pipe - 3 Metre Length	PVC PIPES	28
TR-CP-140-B	Black trunking 140mm Straight Connector	TRUNKING	12	X-PVCU-1TP	PVCU - T Piece	PVC PIPES	28
TR-D-140	140mm Ivory trunking (2000mm Length)	TRUNKING	12	X-PVCU-3/4-45T	PVCU - 45 Degree T	PVC PIPES	28
TR-D-140-B	140mm Black trunking (2000mm Length)	TRUNKING	12	X-PVCU-3/4-CAP	PVCU - Threaded Cap	PVC PIPES	28
TR-EC-140	Ivory trunking 90 Degree External Bend	TRUNKING	12	X-PVCU-3/4-EC	PVCU - End Cap	PVC PIPES	28
TR-EC-140-B	Black trunking 140mm Straight Connector	TRUNKING	12	X-PVCU-3/4-MAC	PVCU - Maclow Clips	PVC PIPES	28
TR-EC-140-B	Black trunking 90 Degree External Bend	TRUNKING	12	X-PVCU-3/4-PIN	PVCU - Pin / Barrel	PVC PIPES	28
TR-FB-140	Ivory trunking 90 Degree Flat Bend	TRUNKING	12	X-PVCU-3/4-R	PVCU - Reducer	PVC PIPES	28
TR-FB-140-B	Black trunking 90 Degree Flat Bend	TRUNKING	12	X-PVCU-3/4-RE	PVCU - Rodding Eye	PVC PIPES	28
TR-IC-140	Ivory trunking 140mm 90° Internal Bend	TRUNKING	12	X-PVCU-3/4-SOC	PVCU - Socket	PVC PIPES	28
TR-IC-140-B	Black trunking 140mm 90° bend	TRUNKING	12	X-PVCU-3/4-TP	PVCU - T Piece	PVC PIPES	28
TR-WC-140	Ivory trunking 140mm Wall Cover	TRUNKING	12	X-PVCU-3/4E-45	PVCU - Elbow - 45 Degree	PVC PIPES	28
TR-WC-140-B	Black trunking 140mm Wall Cover	TRUNKING	12	X-PVCU-3/4E-90	PVCU - Elbow - 90 Degree	PVC PIPES	28
TW-KIT	Through the Wall Insulation Kit	INSULATION	10	X-PVCU-3/4P-3M	PVCU - Pipe - 3 Metre Length	PVC PIPES	28
tw-kit	Sleeved PVC coated insulation kit	INSULATION	22	X-PVCU-SOBS-110MM	Strap On Boss - 110mm PVCU	PIPES	28
X-1GDPSW-13A	Switch 1 Gang - 13 Amp	FUSED SPUR SWITCHES	23	X-SOLCEM	Solvent Cement	CEMENT	27
X-2GDPSW-13A	Switch 2 Gang - 13 Amp	FUSED SPUR SWITCHES	23				
X-2GSW2W-10A	Switch 2 Gang - 10 Amp	FUSED SPUR SWITCHES	23				
X-3GSW2W-10A	Switch 3 Gang - 10 Amp	FUSED SPUR SWITCHES	23				
X-BBSM-25	Back Box Surface Mount - 25mm	FUSED SPUR SWITCHES	23				
X-BBSM-35	Back Box Surface Mount - 35mm	FUSED SPUR SWITCHES	23				
X-BBSM26-25	Back Box 2 Gang - 25mm	FUSED SPUR SWITCHES	23				
X-BBSM2G-35	Back Box 2 Gang - 35mm	FUSED SPUR SWITCHES	23				
X-BSPS-10A	Plug Socket - 10 Amp	FUSED SPUR SWITCHES	23				
X-DPSW-20A	Switch Double Pole - 20 Amp	FUSED SPUR SWITCHES	23				
X-FS	Fused Spur Plastic - without neon	FUSED SPUR SWITCHES	23				
X-FSBBMC	Fused Spur Metal Clad - with Back Box	FUSED SPUR SWITCHES	23				
X-FSN	Fused Spur Plastic - with neon	FUSED SPUR SWITCHES	23				
X-FSNBBMC	Fused Spur Metal Clad Back Box & Neon	FUSED SPUR SWITCHES	23				
X-PT	Plug Top - 13 Amp	FUSED SPUR SWITCHES	23				
X-PVCU-1-1/4-3M	PVCU - Pipe - 3 Metre Length	PVC PIPES	28				
X-PVCU-1-1/4-45T	PVCU - 45 Degree T	PVC PIPES	28				
X-PVCU-1-1/4-CAP	PVCU - Threaded Cap	PVC PIPES	28				
X-PVCU-1-1/4-MAC	PVCU - Maclow Clips	PVC PIPES	28				
X-PVCU-1-1/4-PIN	PVCU - Pin / Barrel	PVC PIPES	28				
X-PVCU-1-1/4-R	PVCU - Reducer	PVC PIPES	28				
X-PVCU-1-1/4-RE	PVCU - Rodding Eye	PVC PIPES	28				
X-PVCU-1-1/4-SOC	PVCU - Socket	PVC PIPES	28				
X-PVCU-1-1/4-TP	PVCU - T Piece	PVC PIPES	28				
X-PVCU-1-1/4E-45	PVCU - Elbow - 45 Degree	PVC PIPES	28				
X-PVCU-1-1/4E-90	PVCU - Elbow - 90 Degree	PVC PIPES	28				

## BY ITEM

ITEM	PART CODE	SECTION	PAGE	ITEM	PART CODE	SECTION	PAGE
140mm Black trunking (2000mm Length)	TR-D-140-B	TRUNKING	12	FLEXI-FOOT Kit - 600 x 150 high	FF-600-S-150-KIT-3	MOUNTING	6
140mm Ivory trunking (2000mm Length)	TR-D-140	TRUNKING	12	Flexi-Lite Slab Kit	FF-UC3	MOUNTING	5
Abrasive Cloth - 120 Grit - 1-1/2" x 10 yards	SC-10	TAPES	24	Flexi-Lite Slab Kit - 3 FEET - extra large	FF-UC3-3XL	MOUNTING	5
Air source heat pump soakaway	ASHP-SOAK	ACCESSORIES	8	Flexi-Lite Slab Kit - 3 FEET - extra large	FF-UC3-3XL-150	MOUNTING	5
Anti Syphon Kit - 9.5mm (3/8")	anti-syph-kit	PUMP ACCESSORIES	21	Flexi-Lite Slab Kit - extra large	FF-UC3-XL	MOUNTING	5
Anti Vibration Mounting Bolts	AVMB-1	ACCESSORIES	7	Flexible ASHP Hose Pair -300mm x 28mm	FH-300-28-1-1/4ELB	HOSES	9
Audible alarm	audible-alarm	ALARMS	21	Flexible ASHP Hose Pair -300mm x 28mm	FH-300-28-F-ELBOW	HOSES	9
Back Box 2 Gang - 25mm	X-BBSM26-25	FUSED SPUR SWITCHES	23	Flexible ASHP Hose Pair -500mm x 22mm	FH-500-22-F	HOSES	9
Back Box 2 Gang - 35mm	X-BBSM2G-35	FUSED SPUR SWITCHES	23	Flexible ASHP Hose Pair -500mm x 28mm	FH-500-28-F	HOSES	9
Back Box Surface Mount - 25mm	X-BBSM-25	FUSED SPUR SWITCHES	23	Flexible ASHP Hose Pair -750mm x 28mm	FH-750-28-1-1/4M	HOSES	9
Back Box Surface Mount - 35mm	X-BBSM-35	FUSED SPUR SWITCHES	23	Flexible ASHP Hose Pair -750mm x 28mm	FH-750-28-F	HOSES	9
Black trunking 140mm 90° bend	TR-IC-140-B	TRUNKING	12	Flexible ASHP Hose Pair -750mm x 28mm	FH-750-28-F-ELBOW	HOSES	9
Black trunking 140mm Straight Connector	TR-CP-140-B	TRUNKING	12	Flexible ASHP Hose Pair -750mm x 28mm	FH-750-28-1-1/4F	HOSES	9
Black trunking 140mm Straight Connector	TR-EC-140-B	TRUNKING	12	Flexible ASHP Hose Pair -750mm x 28mm	FH-750-28-M	HOSES	9
Black trunking 140mm Wall Cover	TR-WC-140-B	TRUNKING	12	Foam Sealant - 355ml	1714	SEALANT	26
Black trunking 90 Degree External Bend	TR-EC-140-B	TRUNKING	12	Foam Sealant - 355ml	1714	SEALANT	26
Black trunking 90 Degree Flat Bend	TR-FB-140-B	TRUNKING	12	Foam Sealant - 591ml	1724	SEALANT	26
Boiler Buoy - Condensate Bypass Valve	BB-1	BYPASS VALVE	20	Foam Sealant - 591ml	1724	SEALANT	26
Condensate drain adaptor	adap-1	PUMP ACCESSORIES	21	Fused Spur Metal Clad - with Back Box	X-FSBBMC	FUSED SPUR SWITCHES	23
Condensate drain hose - 9.5mm (3/8")	rvt-3/8	PUMP ACCESSORIES	21	Fused Spur Metal Clad Back Box & Neon	X-FSNBBMC	FUSED SPUR SWITCHES	23
Cool-Weld Heat Barrier Spray	COOLWELD-32	WELDING	25	Fused Spur Plastic - with neon	X-FSN	FUSED SPUR SWITCHES	23
Diversi-Gum Sealing compound	6-202-1	SEALANT	26	Fused Spur Plastic - without neon	X-FS	FUSED SPUR SWITCHES	23
Diversi-Gum Sealing compound	6-202-2	SEALANT	26	G2G Green 1L pre-mixed Coil Cleaner Spray	G2G-Green+	CHEMICALS	13
Drain Gun - Adaptor Kit	GG-1A	DRAIN LINE CLEANER	23	Grip-Cut Open Mesh Sand Screen Cloth	SCM-5	TAPES	24
Drain Gun - Hose Assembly	GG-1H	DRAIN LINE CLEANER	23	Guard INV	CG-750-INV	GUARDS	11
Drain Gun - Pack of 6, CO2 Cartridges	GGC-6	DRAIN LINE CLEANER	23	Guard L	CG-900L-INV	GUARDS	11
Drain Gun Line Cleaner	GG-1	DRAIN LINE CLEANER	23	Guard L	CG-L	GUARDS	11
Fill & Flush Flow setter	FBV-F&F-1-FF	VALVE	7	Guard L	CG-750-L	GUARDS	11
Flexi Foot 1000	FF-1000-S	MOUNTING	6	Guard L-SQ	CG-900L-SQ	GUARDS	11
Flexi Foot 250	FF-250-S	MOUNTING	6	Guard M	CG-M	GUARDS	11
Flexi Foot 400	FF-400-S	MOUNTING	6	Guard S	CG-S	GUARDS	11
Flexi Foot 600	FF-600-F	MOUNTING	6	Guard S	CG-750-S	GUARDS	11
Flexi Foot 600-S-150	FF-600-S-150	MOUNTING	6	Guard XL	CG-XL	GUARDS	11
Flexi Foot Fix Clamp	FF-FIXCLAMP	ACCESSORIES	7	Guard XXL	CG-900-XXL	GUARDS	11
Flexi Lite Kit - medium	FF-UC3-M	MOUNTING	5	GuardM	CG-750-M	GUARDS	11
Flexi Lite Kit - small	FF-UC3-S	MOUNTING	5	Hose 'T' connector - Nylon 9.5mm (3/8")	701-038	PUMP ACCESSORIES	21
Flexi lite Slab Kit - 3 FEET	FF-UC3-3	MOUNTING	5	Hose clamp - 6.3mm - 9.5mm (1/4 - 3/8")	b-6h	PUMP ACCESSORIES	21
Flexi Patch Fibreglass repair patch	FP-36	REPAIR PATCH	26	Hose clip	927033	PUMP ACCESSORIES	21
FLEXI-FOOT Kit - 1000	FF-1000-S-KIT	MOUNTING	6	Hose connector - Nylon 9.5mm (3/8")	701-032	PUMP ACCESSORIES	21
FLEXI-FOOT Kit - 400	FF-400-S-KIT	MOUNTING	6	Ivory trunking 140mm 90 Degree Internal Bend	TR-IC-140	TRUNKING	12
FLEXI-FOOT Kit - 600	FF-600-S-KIT	MOUNTING	6	Ivory trunking 140mm Straight Connector	TR-CP-140	TRUNKING	12
FLEXI-FOOT Kit - 600	FF-600-S-KIT-3	MOUNTING	6	Ivory trunking 140mm Wall Cover	TR-WC-140	TRUNKING	12
FLEXI-FOOT Kit - 600 narrow	FF-600-3-ASN-KIT	MOUNTING	6	Ivory trunking 90 Degree External Bend	TR-EC-140	TRUNKING	12
FLEXI-FOOT Kit - 600 x 150 high	FF-600-S-150-KIT	MOUNTING	6	Ivory trunking 90 Degree Flat Bend	TR-FB-140	TRUNKING	12



BY ITEM

ITEM	PART CODE	SECTION	PAGE
Keyhole Braze Barrier Mat	16510	TAPES	24
Leak Detection Spray 500ml	AER-B-500	LEAK DETECTION	13
Little Giant Automatic Pool Cover Pump	APCP-1700	DRAINAGE PUMPS	19
Little Giant Drainage Basement Pump	6E-CIA-SFS	DRAINAGE PUMPS	19
MAP+	MAP+	GAS	23
Metal tray	CCTM01420-BL	TRAYS	5
Metal tray - 1080mm	CCTM-1080	TRAYS	5
Metal tray - 1300mm	CCTM-1300	TRAYS	5
Metal tray - large	CCTM-1400	TRAYS	5
Metal tray - medium	CCTM-1100	TRAYS	5
Metal tray - small	CCTM-800	TRAYS	5
Mirror 1-1/4" circular	M-1	MIRRORS	25
Mirror 22mm (7/8")	M-4	MIRRORS	25
Mirror 25mm x 50mm	M-5	MIRRORS	25
Mirror 54mm x 183mm	M-3	MIRRORS	25
Mirror 57mm (2-1/4")	M-2	MIRRORS	25
Non-return check valve - 9.5mm (3/8")	ph-pump-nrv	PUMP ACCESSORIES	21
Non-Return Valve	PP-21.5-NRV	VALVES	27
Non-Return Valve - with Hose Fitting	PP-UNI-NRV	VALVES	27
PH 0.8 Litre Tank Pump	PH-0.8L-HL	CONDENSATE PUMPS	16
PH 0.8 Litre Tank Pump with Cover	PH-0.8LC	CONDENSATE PUMPS	16
PH 2 Litre Tank Pump	PH-20-STA	CONDENSATE PUMPS	16
PH 20 Litre with lime chippings	BCONDNEUT-20L	NEUTRALISERS	18
PH 30 Litre with pump & lime chippings	BCONDNEUT-30L	NEUTRALISERS	18
PH High Temperature Pressure Relief Pump	PH-3.8L-HW	HIGH TEMPERATURE PUMPS	17
PH High Temperature Pressure Relief Pump	PH-5L-HW	HIGH TEMPERATURE PUMPS	17
Pipe Clamp	PP-UNI-CL-W-32-40	PIPE CLAMPS	27
Pipe Clamp Kit	PP-CL-21.5-W-32-40	PIPE CLAMPS	27
Pivot 33 Camo	24-460	TORCHES	24
Pivot 33 Yellow/Black	24-458	TORCHES	24
Pivot Mini Camo	11117	TORCHES	24
Pivot Mini Yellow/Black	11115	TORCHES	24
Pivot Yellow/Black	11114	TORCHES	24
Plain Braze Barrier Mat	16500	TAPES	24
Plastic Pipe	PP-PIPE-21.5-B	PLASTIC PIPE FITTINGS	27
Plastic Pipe	PP-PIPE-21.5-W	PLASTIC PIPE FITTINGS	27
Plastic Pipe	PP-T-21.5-B	PLASTIC PIPE FITTINGS	27
Plastic Pipe	PP-T-21.5-W	PLASTIC PIPE FITTINGS	27
Plastic Pipe - 45 Degree Elbow	PP-45EL-21.5-B	PLASTIC PIPE FITTINGS	27
Plastic Pipe - 45 Degree Elbow	PP-45EL-21.5-W	PLASTIC PIPE FITTINGS	27
Plastic Pipe - 90 Degree Elbow	PP-90EL-21.5-B	PLASTIC PIPE FITTINGS	27
Plastic Pipe - 90 Degree Elbow	PP-90EL-21.5-W	PLASTIC PIPE FITTINGS	27
Plastic Pipe - Straight Connector	PP-CON-21.5-B	PLASTIC PIPE FITTINGS	27
Plastic Pipe - Straight Connector	PP-CON-21.5-W	PLASTIC PIPE FITTINGS	27

ITEM	PART CODE	SECTION	PAGE
Plastic Pipe Clip	PP-CL-15-W	PLASTIC PIPE FITTINGS	27
Plastic Pipe Clip	PP-CL-22-W	PLASTIC PIPE FITTINGS	27
Plastic Pipe Clip	PP-CL-28-W	PLASTIC PIPE FITTINGS	27
Plastic Pipe Clip	PP-CL-32-B	PLASTIC PIPE FITTINGS	27
Plastic Pipe Clip	PP-CL-32-G	PLASTIC PIPE FITTINGS	27
Plastic Pipe Clip	PP-CL-32-W	PLASTIC PIPE FITTINGS	27
Plastic Pipe Clip	PP-CL-40-B	PLASTIC PIPE FITTINGS	27
Plastic Pipe Clip	PP-CL-40-G	PLASTIC PIPE FITTINGS	27
Plastic Pipe Clip	PP-CL-40-W	PLASTIC PIPE FITTINGS	27
Plug Socket - 10 Amp	X-BSPS-10A	FUSED SPUR SWITCHES	23
Plug Top - 13 Amp	X-PT	FUSED SPUR SWITCHES	23
Portable (cooling)	PAC-C-12-R290	PORTABLE MACHINES	22
Portable (heat pump)	PAC-H-12-R290	PORTABLE MACHINES	22
Pre slit and seal 1000mm L x 19mm Thickness	FH-I-1000-22-SLIT	INSULATION	10
Pre slit and seal 1000mm L x 19mm Thickness	FH-I-1000-28-SLIT	INSULATION	10
Pre slit and seal 1000mm L x 19mm Thickness	FH-I-1000-35-SLIT	INSULATION	10
Pro-Green 5 Litre Concentrated Coil Cleaner	Pro-Green-GB	CHEMICALS	13
PVC Coated Weather & Waterproof Insulation	FH-I-1000-15	INSULATION	9
PVC Coated Weather & Waterproof Insulation	FH-I-1000-22	INSULATION	9
PVC Coated Weather & Waterproof Insulation	FH-I-1000-28	INSULATION	9
PVC Coated Weather & Waterproof Insulation	FH-I-1000-35	INSULATION	9
PVC Coated Weather & Waterproof Tape	INS-TAPE-10-PK	INSULATION	9
PVC Coated Weatherproof Insulation Tape	INS-TAPE-10-PK	INSULATION	10
PVCU - 45 Degree T	X-PVCU-1-1/4-45T	PVC PIPES	28
PVCU - 45 Degree T	X-PVCU-3/4-45T	PVC PIPES	28
PVCU - Elbow - 45 Degree	X-PVCU-1-1/4E-45	PVC PIPES	28
PVCU - Elbow - 45 Degree	X-PVCU-3/4E-45	PVC PIPES	28
PVCU - Elbow - 90 Degree	X-PVCU-1-1/4E-90	PVC PIPES	28
PVCU - Elbow - 90 Degree	X-PVCU-1E-90	PVC PIPES	28
PVCU - Elbow - 90 Degree	X-PVCU-3/4E-90	PVC PIPES	28
PVCU - End Cap	X-PVCU-3/4-EC	PVC PIPES	28
PVCU - Maclow Clips	X-PVCU-1-1/4-MAC	PVC PIPES	28
PVCU - Maclow Clips	X-PVCU-1-MAC	PVC PIPES	28
PVCU - Maclow Clips	X-PVCU-3/4-MAC	PVC PIPES	28
PVCU - Pin / Barrel	X-PVCU-1-1/4-PIN	PVC PIPES	28
PVCU - Pin / Barrel	X-PVCU-3/4-PIN	PVC PIPES	28
PVCU - Pipe - 3 Metre Length	X-PVCU-1-1/4-3M	PVC PIPES	28
PVCU - Pipe - 3 Metre Length	X-PVCU-1P-3M	PVC PIPES	28
PVCU - Pipe - 3 Metre Length	X-PVCU-3/4P-3M	PVC PIPES	28
PVCU - Reducer	X-PVCU-1-1/4-R	PVC PIPES	28
PVCU - Reducer	X-PVCU-3/4-R	PVC PIPES	28
PVCU - Rodding Eye	X-PVCU-1-1/4-RE	PVC PIPES	28
PVCU - Rodding Eye	X-PVCU-3/4-RE	PVC PIPES	28
PVCU - Socket	X-PVCU-1-1/4-SOC	PVC PIPES	28

## BY ITEM

ITEM	PART CODE	SECTION	PAGE	ITEM	PART CODE	SECTION	PAGE
PVCU – Socket	X-PVCU-1-SOC	PVC PIPES	28	Type 2 Bracket – Double XL (3 arms)	CBR2-XXL-3A	BRACKETS	4
PVCU – Socket	X-PVCU-3/4-SOC	PVC PIPES	28	Type 2 Bracket – Double XL (3 arms)	CBR2-XXL-3A-BL	BRACKETS	4
PVCU – T Piece	X-PVCU-1-1/4-TP	PVC PIPES	28	Type 2 Bracket – Double XL (3 arms)	CBR2-XXL-3A-BL-D	BRACKETS	4
PVCU – T Piece	X-PVCU-1TP	PVC PIPES	28	Type 2 Bracket – Double XL (3 arms)	CBR2-XXL-3A-BL-D	BRACKETS	4
PVCU – T Piece	X-PVCU-3/4-TP	PVC PIPES	28	Type 2 Bracket – Large	CBR2-L	BRACKETS	4
PVCU – Threaded Cap	X-PVCU-1-1/4-CAP	PVC PIPES	28	Type 2 Bracket – Medium	CBR2-M	BRACKETS	4
PVCU – Threaded Cap	X-PVCU-3/4-CAP	PVC PIPES	28	Type 2 Bracket – Small	CBR2-S	BRACKETS	4
Rotary isolators 3-pole	IS-3P-20A	ISOLATORS	6	Type 2 Bracket – XL	CBR2-XL	BRACKETS	4
Rotary isolators 3-pole	IS-3P-20A-S	ISOLATORS	6	Type 2 Bracket – XL	CBR2-XL-BL	BRACKETS	4
Rotary isolators 3-pole	IS-3P-32A	ISOLATORS	6	Type 2 Bracket – XL (3 arms)	CBR2-XL-3A	BRACKETS	4
Rotary isolators 3-pole	IS-3P-32A-S	ISOLATORS	6	Type 2 Bracket – XL (3 arms)	CBR2-XL-3A-BL	BRACKETS	4
Rotary isolators 3-pole	IS-3P-40A	ISOLATORS	6	Wooden guard large	CG-750L-WOOD	GUARDS	11
Rotary isolators 3-pole	IS-3P-63A	ISOLATORS	6	Wooden guard large INV	CG-750LINV-WOOD	GUARDS	11
Rotary isolators 4-pole	IS-4P-20A	ISOLATORS	6	Wooden guard large+	CG-750L+WOOD	GUARDS	11
Rotary isolators 4-pole	IS-4P-20A-S	ISOLATORS	6	Wooden guard large+ INV	CG-750L+INVWOOD	GUARDS	11
Rotary isolators 4-pole	IS-4P-32A	ISOLATORS	6	Wooden guard medium	CG-750M-WOOD	GUARDS	11
Rotary isolators 4-pole	IS-4P-32A-S	ISOLATORS	6	Wooden guard medium+	CG-750M+WOOD	GUARDS	11
Rotary isolators 4-pole	IS-4P-40A	ISOLATORS	6	Wooden guard small	CG-750S-WOOD	GUARDS	11
Rotary isolators 4-pole	IS-4P-63A	ISOLATORS	6	WypAll Plus Towels	5-05790	CLOTHS	25
Self-sealing pipe adapto	SV-ADAPTOR	PIPE ADAPTORS	21				
Self-sealing pipe adapto	SVA-3	PIPE ADAPTORS	21				
Self-sealing pipe adaptor	SV-ADAPTOR-6	PIPE ADAPTORS	21				
Self-sealing pipe adaptor	SVA-6-3	PIPE ADAPTORS	21				
Sleeved PVC coated insulation kit	tw-kit	INSULATION	22				
Soakaway Kit for Condensing Boilers	SOAK1	SOAKAWAY	20				
Solvent Cement	X-SOLCEM	CEMENT	27				
Stainless Floor Bracket Kit for drip trays	CCTM-FLOOR-BRKT-KIT	ACCESSORIES	7				
Stainless Floor Bracket Kit for drip trays	CCTM-FLOOR-BRKT-KIT3	ACCESSORIES	7				
Strap On Boss	PP-SOBOSS-110-B-32	PIPES	28				
Strap On Boss	PP-SOBOSS-110-B-40	PIPES	28				
Strap On Boss	PP-SOBOSS-110-G-32	PIPES	28				
Strap On Boss	PP-SOBOSS-110-G-40	PIPES	28				
Strap On Boss – 110mm PVCU	X-PVCU-SOBSC-110MM	PIPES	28				
Super Seal Large Systems over 17kW	948-KIT	CHEMICALS	13				
Super Seal Medium Systems from 5-17 kW	944-KIT	CHEMICALS	13				
Super Seal Small Systems Up To 5kW	947-KIT	CHEMICALS	13				
Switch 1 Gang – 13 Amp	X-1GDP5W-13A	FUSED SPUR SWITCHES	23				
Switch 2 Gang – 10 Amp	X-2GSW2W-10A	FUSED SPUR SWITCHES	23				
Switch 2 Gang – 13 Amp	X-2GDP5W-13A	FUSED SPUR SWITCHES	23				
Switch 3 Gang – 10 Amp	X-3GSW2W-10A	FUSED SPUR SWITCHES	23				
Switch Double Pole – 20 Amp	X-DPSW-20A	FUSED SPUR SWITCHES	23				
Through the Wall Insulation Kit	TW-KIT	INSULATION	10				
TIF Electronic Leak Detector	TIF-XP1A	LEAK DETECTION	13				
Type 2 Bracket – Double XL	CBR2-XXL	BRACKETS	4				



# ENGINEER ON CALL

TELEPHONE



DiversiTech International Ltd.  
Glaisdale Drive East Nottingham NG8 4LY United Kingdom  
T: +44(0)115 900 5858 E: sales@diversitech.com W: www.diversitech.global

